



mcdonald jones

FIND YOURSELF AT HOME

Bronte



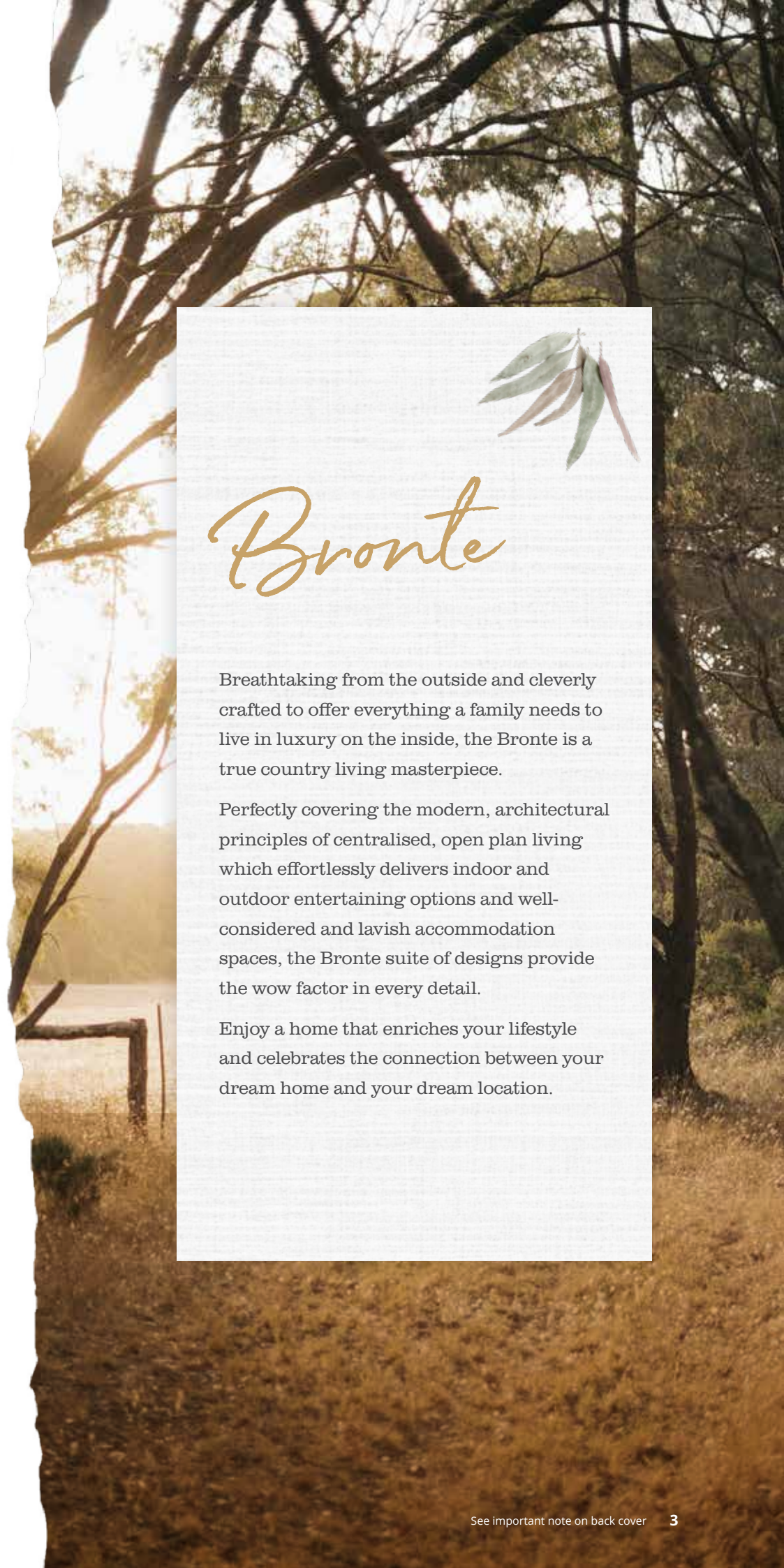
COUNTRY LIVING  
COLLECTION



*Life is uncomplicated, relaxed  
and always inspiring in the Bronte.*







# Bronte

Breathtaking from the outside and cleverly crafted to offer everything a family needs to live in luxury on the inside, the Bronte is a true country living masterpiece.

Perfectly covering the modern, architectural principles of centralised, open plan living which effortlessly delivers indoor and outdoor entertaining options and well-considered and lavish accommodation spaces, the Bronte suite of designs provide the wow factor in every detail.

Enjoy a home that enriches your lifestyle and celebrates the connection between your dream home and your dream location.



# Bronte Executive



26.865m width x 15.015m length  
(not incl. Alfresco)

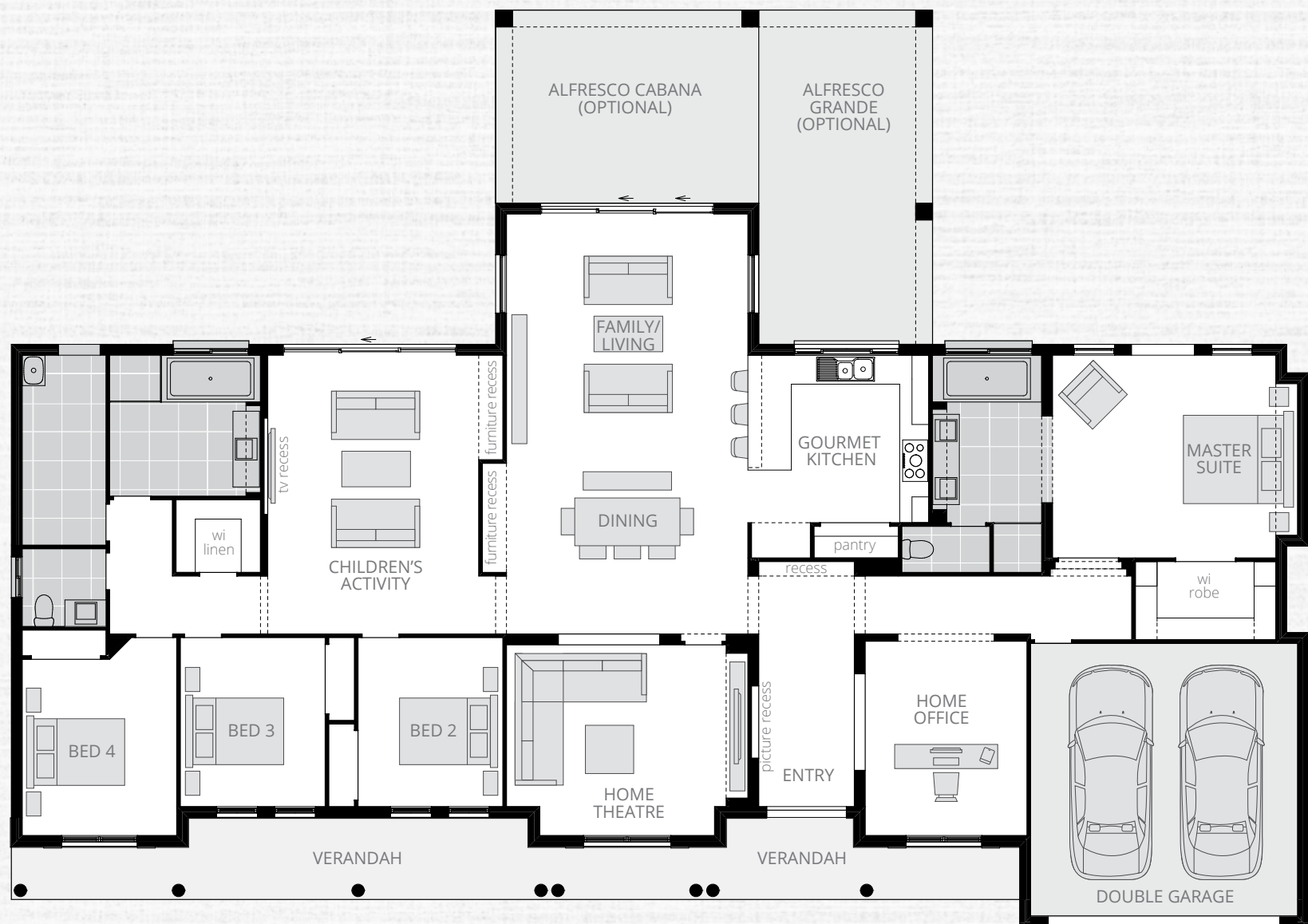
Family/Living/Dining	5.0 x 8.7
Master Suite	5.1 x 4.2
Bed 2	3.0 x 3.5
Bed 3	3.0 x 3.5
Bed 4	3.2 x 3.7
Home Theatre	5.0 x 4.0
Children's Activity	4.4 x 5.8
Home Office	3.4 x 4.0
Double Garage	5.5 x 5.7
Alfresco Cabana	5.5 x 4.0
Alfresco Grande	9.1 x 6.9

**PLAN FACADE**  
This plan depicts the **American Colonial** Facade.

**AVAILABLE FACADES**  
American Colonial | Balinese Porte Cochere |  
Balinese Tropicana E | Classic (included) | Country Pavilion |  
French Provincial | Hampton | Hampton B | Heritage Grange |  
Heritage Grange B | Heritage Grange C | Nexus C |  
Sapphire | Scenic B |









# Upgrades

Similar upgrades  
are available on all  
Bronte plans.

Discuss with your  
Building and Design  
Consultant.

## Bronte Executive

**Alfresco Cabana 5.5m x 4.0m**

**Alfresco Grande 9.1m x 6.9m**

**Alternate Kitchen layout**

**Bi-fold door to Children's Activity and  
Family/Living**

**Bi-fold servery window to Kitchen**

**Coffered ceiling to Entry, Family/Living/Dining,  
Home Theatre, Master Suite and Home Office**

**Desk to Children's Activity**

**French door to Children's Activity and Dining**

**Laundry bench including window**

**Stacking servery window to Kitchen (not shown)**

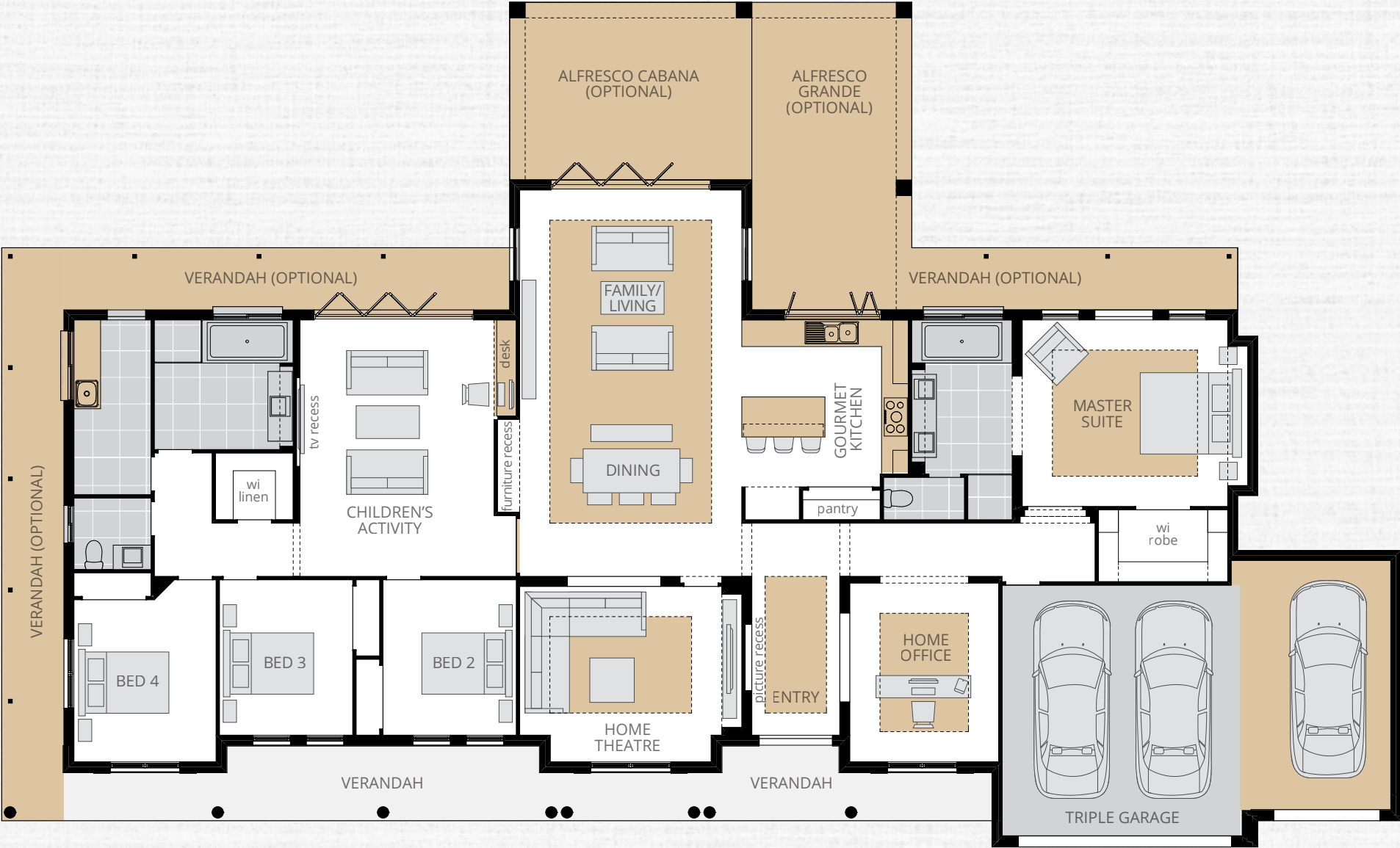
**Triple Garage option**

**Verandahs to side and rear**

**Window to side of Bed 4 - only available  
with Side Verandah option**









# Bronte Executive Grande

5 2 1 2 2 30.0m  
↔ 29.940m width x 15.015m length  
(not incl. Alfresco)

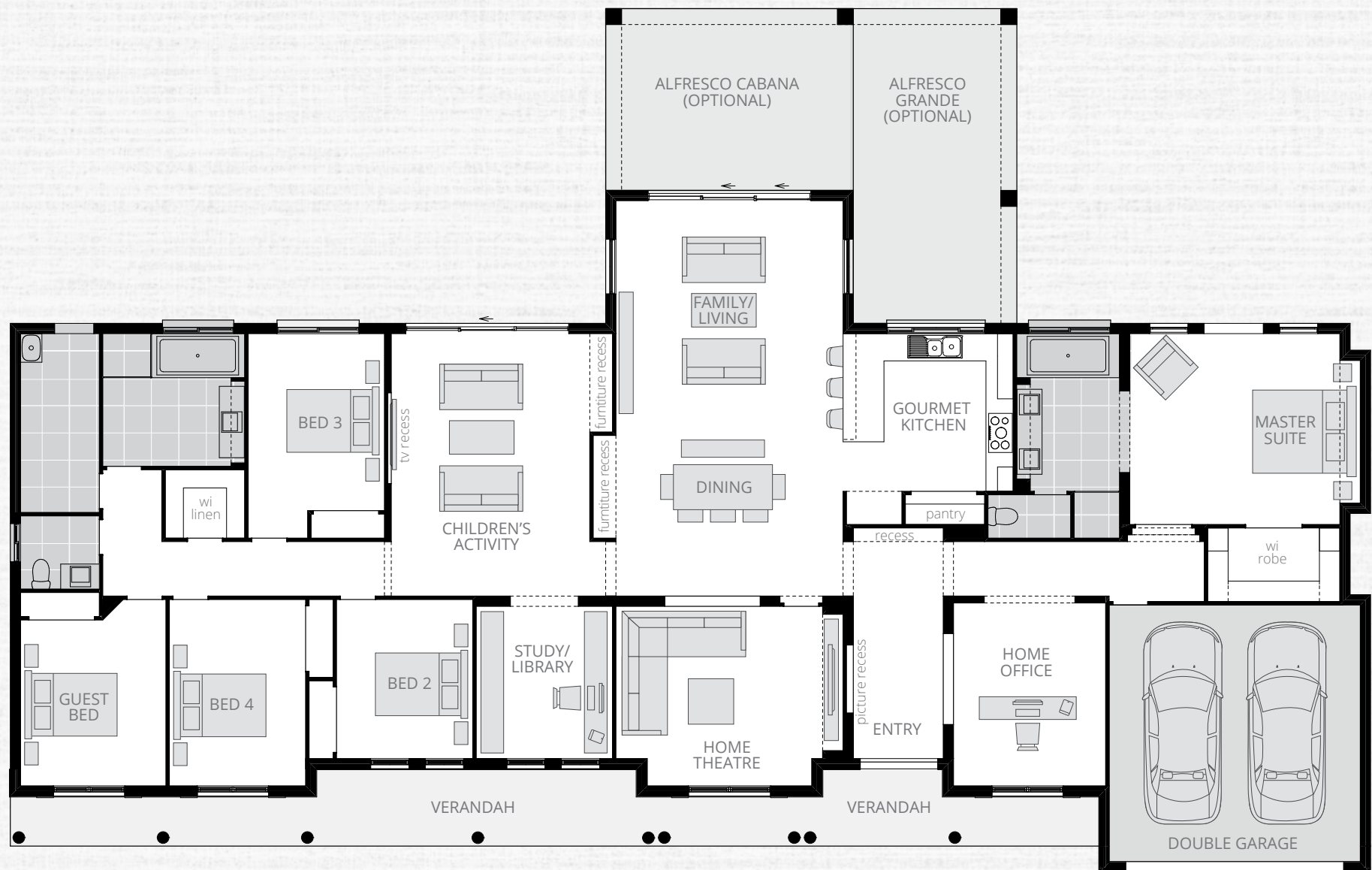
Family/Living/Dining	5.0 x 8.7
Master Suite	5.1 x 4.2
Bed 2	3.0 x 3.5
Bed 3	3.0 x 3.9
Bed 4	3.0 x 4.1
Guest Bed	3.2 x 3.7
Home Theatre	5.0 x 4.0
Children's Activity	4.4 x 5.8
Home Office	3.4 x 4.0
Study/Library	3.0 x 3.4
Double Garage	5.5 x 5.7
Alfresco Cabana	5.5 x 4.0
Alfresco Grande	9.1 x 6.9

**PLAN FACADE**  
This plan depicts the **American Colonial** Facade.

**AVAILABLE FACADES**  
American Colonial | Balinese Porte Cochere |  
Balinese Tropicana E | Classic (included) | Country Pavilion |  
French Provincial | Hampton | Hampton B | Heritage Grange |  
Heritage Grange B | Heritage Grange C | Nexus C |  
Sapphire | Scenic B |









# Bronte Executive Lodge

4 2 1 1 3 30.1m  
↔ 30.085m width x 15.015m length  
(not incl. Alfresco)

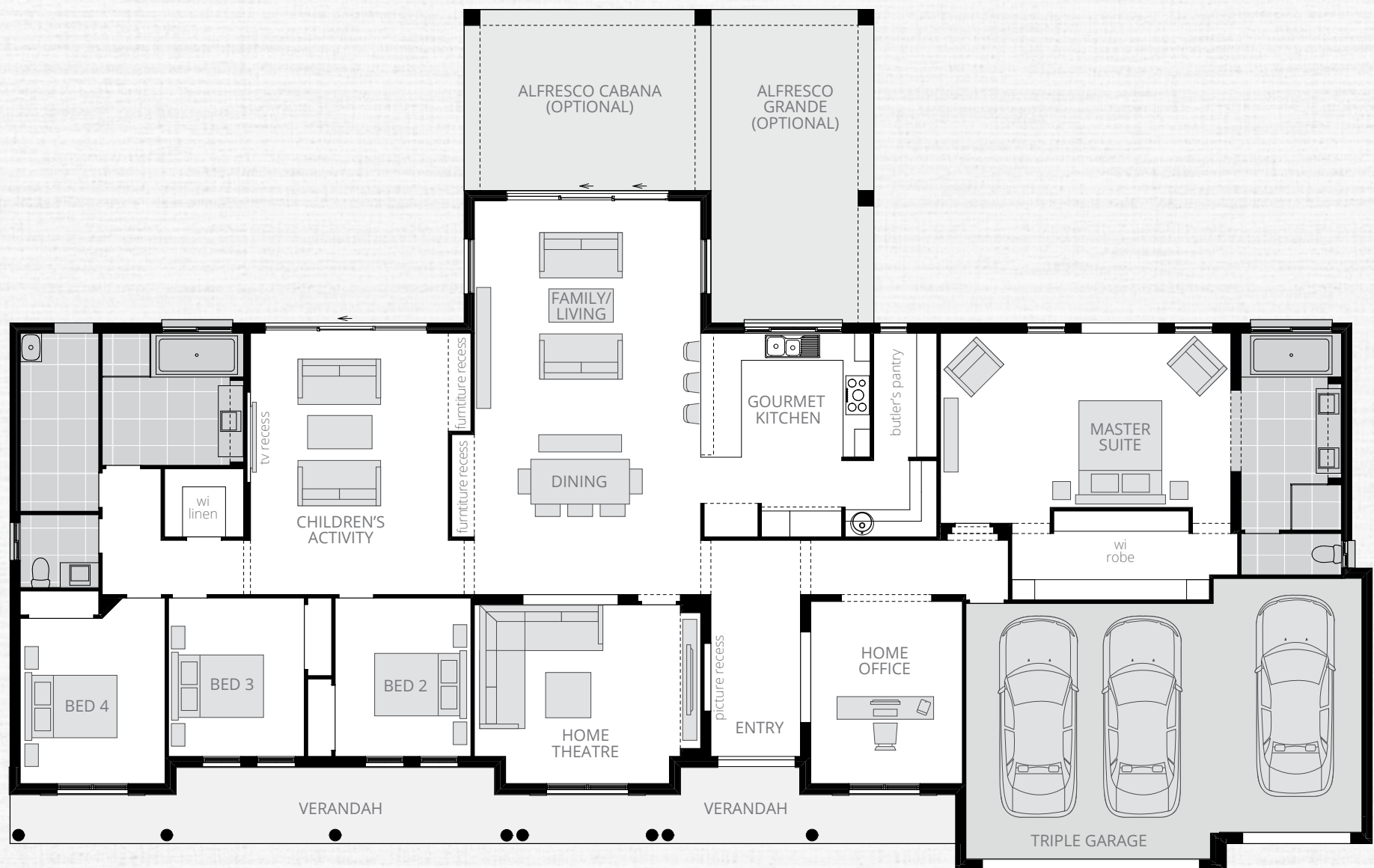
Family/Living/Dining	5.0 x 8.7
Master Suite	6.4 x 3.9
Bed 2	3.0 x 3.5
Bed 3	3.0 x 3.5
Bed 4	3.2 x 3.7
Home Theatre	5.0 x 4.0
Children's Activity	4.4 x 5.8
Home Office	3.4 x 4.0
Triple Garage	8.8 x 5.7
Alfresco Cabana	5.5 x 4.0
Alfresco Grande	9.1 x 6.9

**PLAN FACADE**  
This plan depicts the **American Colonial** Facade.

**AVAILABLE FACADES**  
American Colonial | Balinese Porte Cochere |  
Balinese Tropicana E | Classic (included) | Country Pavilion |  
French Provincial | Hampton | Hampton B | Heritage Grange |  
Heritage Grange B | Heritage Grange C | Nexus C |  
Sapphire | Scenic B |









# Bronte Executive Grande Manor One

5 2 1 2 3 33.2m  
33.160m width x 15.015m length  
(not incl. Alfresco)

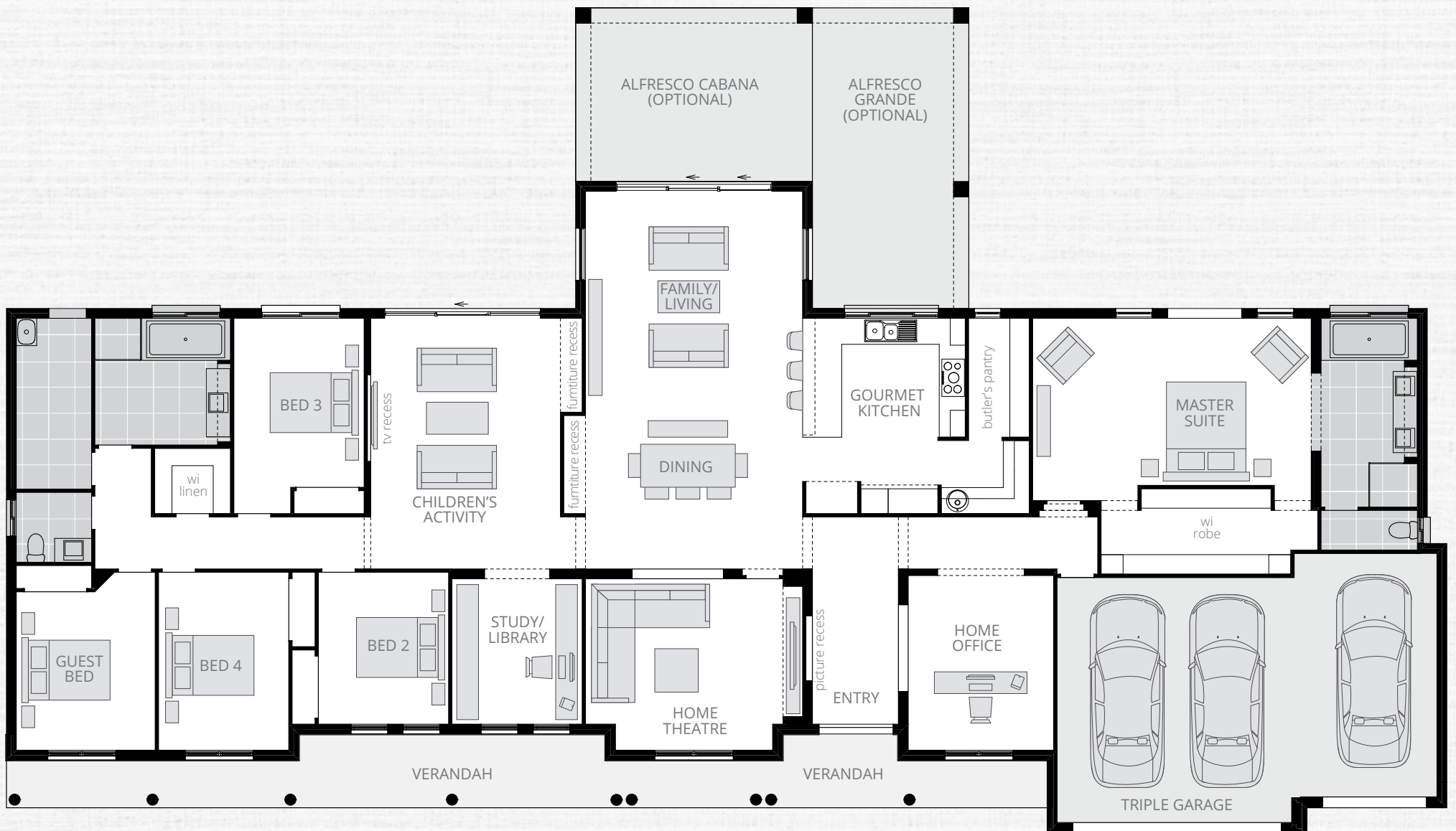
Family/Living/Dining	5.0 x 8.7
Master Suite	6.4 x 3.9
Bed 2	3.0 x 3.5
Bed 3	3.0 x 3.9
Bed 4	3.0 x 4.1
Guest Bed	3.2 x 3.7
Home Theatre	5.0 x 4.0
Children's Activity	4.4 x 5.8
Home Office	3.4 x 4.0
Study/Library	3.0 x 3.4
Triple Garage	8.8 x 5.7
Alfresco Cabana	5.5 x 4.0
Alfresco Grande	9.1 x 6.9

**PLAN FACADE**  
This plan depicts the **American Colonial** Facade.

**AVAILABLE FACADES**  
American Colonial | Balinese Porte Cochere |  
Balinese Tropicana E | Classic (included) | Country Pavilion |  
French Provincial | Hampton | Hampton B | Heritage Grange |  
Heritage Grange B | Heritage Grange C | Nexus C |  
Sapphire | Scenic B |









# Upgrades

Similar upgrades  
are available on all  
Bronte plans.

Discuss with your  
Building and Design  
Consultant.

## Bronte Executive Grande Manor One

**Alfresco Cabana 5.5m x 4.0m**

**Alfresco Grande 9.1m x 6.9m**

**Alternate Kitchen layout with two appliance  
towers and Pantry**

**Bi-fold door to Children's Activity and Family/Living**

**Bi-fold servery window to Kitchen**

**Coffered ceiling to Entry, Family/Living/Dining,  
Home Office, Home Theatre and Master Suite**

**Desk to Children's Activity**

**Desk with drawers and overhead cupboards to Study**

**French door to Children's Activity and Dining**

**Laundry bench including window**

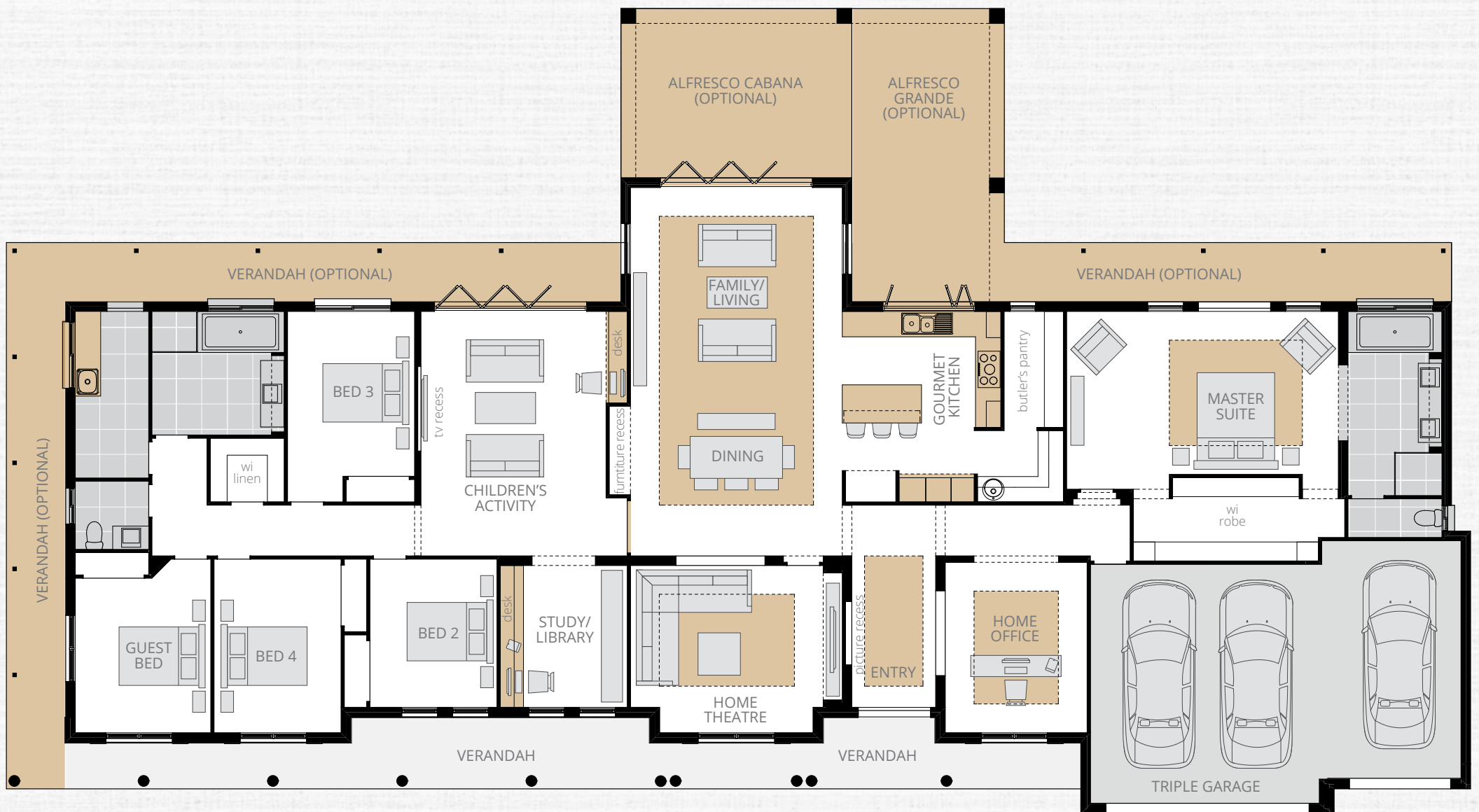
**Stacking servery window to Kitchen (not shown)**

**Verandahs to side and rear**

**Window to side of Guest Bed - only available with Side  
Verandah option**









# Bronte Executive Grande Manor Two

  
5

  
2

  
1

  
2

  
3

  
33.2m

↔ 33.160m width x 15.015m length  
(not incl. Alfresco)

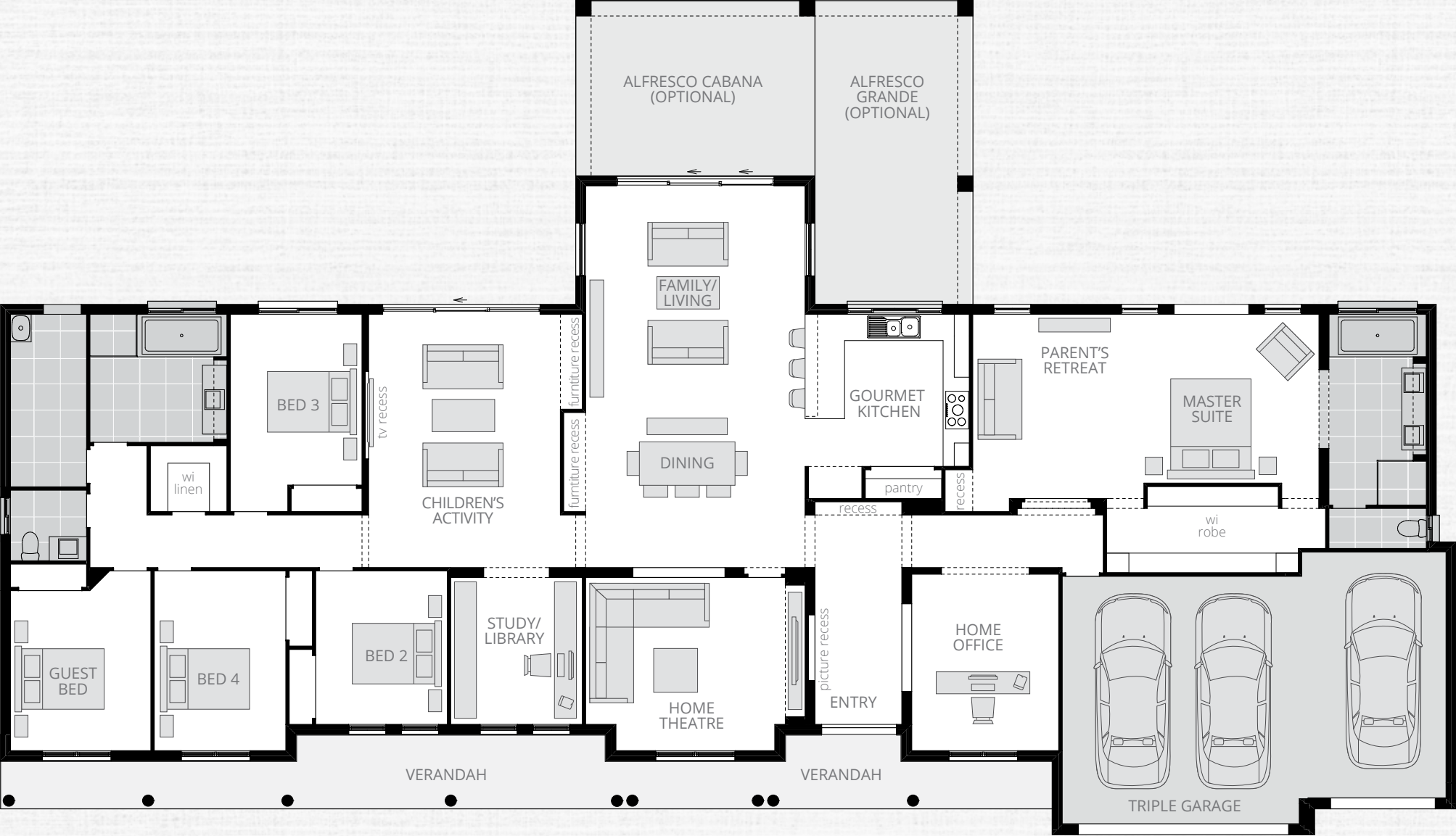
Family/Living/Dining	5.0 x 8.7
Master Suite/Parent's Retreat	7.9 x 3.9
Bed 2	3.0 x 3.5
Bed 3	3.0 x 3.9
Bed 4	3.0 x 4.1
Guest Bed	3.2 x 3.7
Home Theatre	5.0 x 4.0
Children's Activity	4.4 x 5.8
Home Office	3.4 x 4.0
Study/Library	3.0 x 3.4
Triple Garage	8.8 x 5.7
Alfresco Cabana	5.5 x 4.0
Alfresco Grande	9.1 x 6.9

**PLAN FACADE**  
This plan depicts the **American Colonial** Facade.

**AVAILABLE FACADES**  
American Colonial | Balinese Porte Cochere |  
Balinese Tropicana E | Classic (included) | Country Pavilion |  
French Provincial | Hampton | Hampton B | Heritage Grange |  
Heritage Grange B | Heritage Grange C | Nexus C |  
Sapphire | Scenic B |









# Bronte Farmhouse Grande Manor

5 2 1 2 3 33.2m  
33.160m width x 15.015m length  
(not incl. Alfresco)

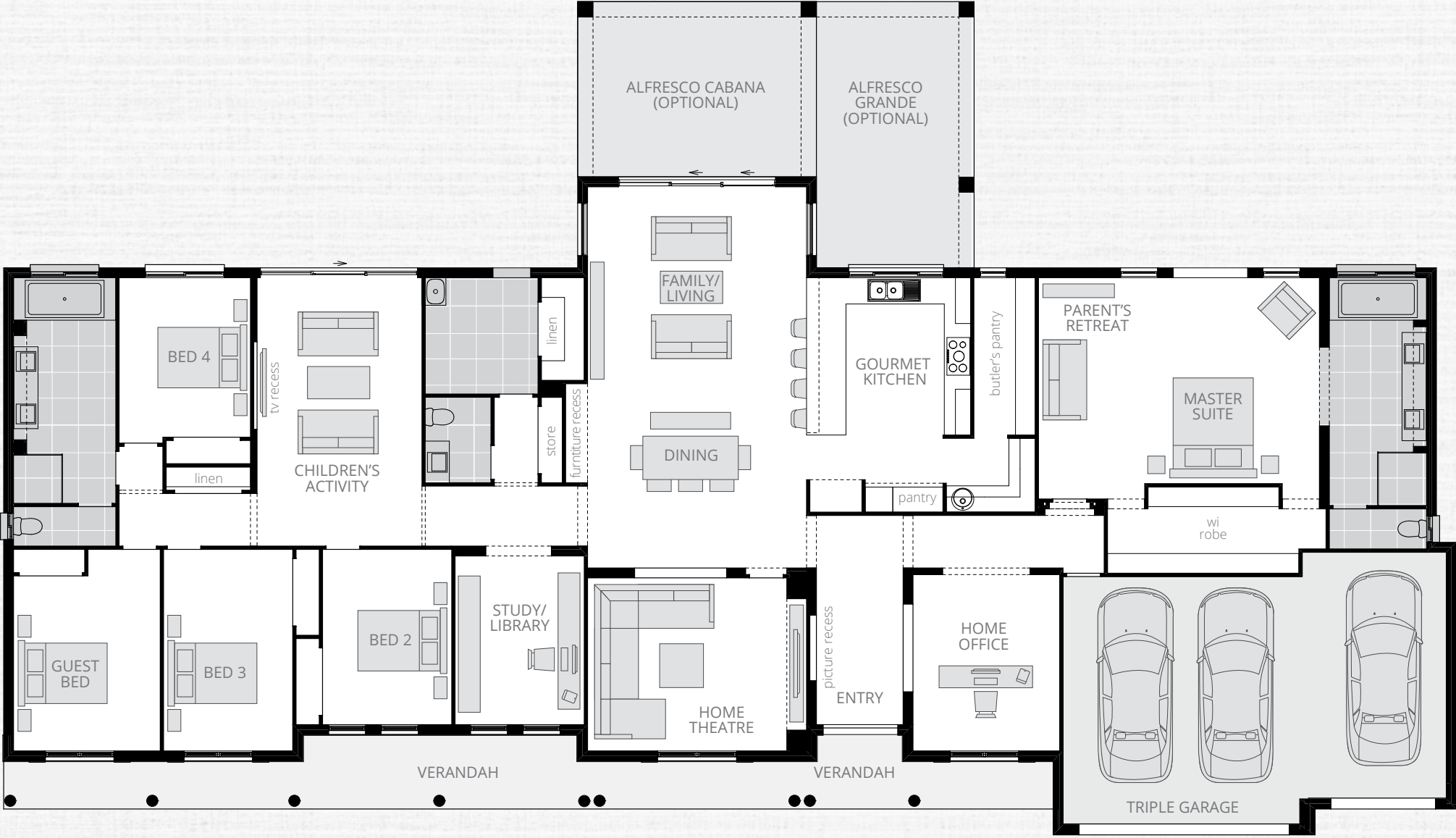
Family/Living/Dining	5.0 x 8.7
Master Suite/ Parent's Retreat	6.4 x 4.7
Bed 2	3.0 x 4.0
Bed 3	3.0 x 4.6
Bed 4	3.0 x 3.6
Guest Bed	3.4 x 4.0
Home Theatre	5.0 x 4.0
Children's Activity	3.8 x 6.1
Home Office	3.4 x 4.0
Study/Library	3.0 x 3.9
Triple Garage	8.8 x 5.7
Alfresco Cabana	5.5 x 4.0
Alfresco Grande	9.1 x 6.1

**PLAN FACADE**  
This plan depicts the **American Colonial** Facade.

**AVAILABLE FACADES**  
American Colonial | Balinese Porte Cochere |  
Balinese Tropicana E | Classic (included) | Country Pavilion |  
French Provincial | Hampton | Hampton B | Heritage Grange |  
Heritage Grange B | Heritage Grange C | Nexus C |  
Sapphire | Scenic B |









# Facades







Facades shown are artist impressions only.



# Facades



Hampton



Hampton B





**Heritage Grange**



**Heritage Grange B**

Facades shown are artist impressions only.



# Facades







**Sapphire**



**Scenic B**

Facades shown are artist impressions only.





# COUNTRY LIVING COLLECTION

1300 555 382

[mcdonaldjoneshomes.com.au](http://mcdonaldjoneshomes.com.au)

Find us on            



Truecore®

Colorbond®



IMPORTANT NOTICE Images of facades shown are a guide only. Material finishes, dimensions and colours shown are purely an expression of the artist and are subject to change. Please refer to our current price list and specifications for facade finishes allowed in published price. Garage doors are panel lift doors. Garage door glazing is an additional cost. Images in this brochure including actual photographs and rendered imagery may depict fixtures, finishes, and features not supplied by McDonald Jones such as furnishings, internal and external fireplaces, landscaping, plants, decking, water features and swimming pools. Accordingly, published prices do not include the supply of any of these items. Images may also depict optional variations to the home design which incur additional costs such as window furnishings, window pelmets, light fittings such as pendant and down lights, front paths, driveways, fencing, barbecues, floor coverings, rendered external walls, upgrade bannisters, and upgraded kitchen/ bathroom layouts or finishes. Images may depict homes from other McDonald Jones design ranges and are used for illustrative purposes. Floor plans and room dimensions may differ slightly depending on your chosen facade (for example, window locations may differ with different facades). Plans are not shown to scale, and all measurements are approximate only. Sliding windows may not open in direction shown. Block widths noted are approximate and suitability may vary by Council (DCP) or Housing Code (CDC) requirements. Title widths have been rounded up so some block widths required could be less. Deleting parapet walls from facades will assist in fitting your house on a lesser sized block. \*Assuming zero lot boundary. Please discuss your block requirements with our Building and Design Consultants. McDonald Jones reserves the right to modify designs or specifications without notice. For detailed home pricing, including details about the standard inclusions for the house and charges for optional variations, please talk to one of our Building and Design Consultants. NSW: McDonald Jones Homes Pty Ltd ABN 82 003 687 232 – NSW BLN: 41628 T/A McDonald Jones Homes - NSW Architect Reg No. 4234. ACT: McDonald Jones Homes (Canberra) Pty Ltd ABN 64 150 533 298 - ACT BLN: 20121296 - ACT Reg No. 2470. © McDonald Jones Homes Pty Ltd. All rights reserved. No part of this brochure may be reproduced, stored in a retrieval system or transmitted in any form or by any means without the prior written permission of McDonald Jones Homes. MCDONALD JONES COUNTRY LIVING COLLECTION – BRONTE – EDITION 6.



**mcdonald jones**  
FIND YOURSELF AT HOME