



mcDonald jones

FIND YOURSELF AT HOME

# Saxonvale



2S  
two storey

# Saxonvale

---

## Striking design, stylish comfort.

Stylish architectural design and perfectly balanced zones combine to create a stylish backdrop to contemporary family living in this stunning home – a testament to everything you've worked so hard to achieve. You'll fall in love with the space it offers and the clever way it brings together all the elements of a two-level home demanded by a large, modern family.

The heart of the home is without a doubt the designer gourmet kitchen. Featuring a spacious walk-in pantry, expansive island bench and plenty of storage, it is the centrepiece of the open family and dining area.

Both the dining and family spaces open to the alfresco cabana, bringing the outside in, surpassing your expectations and setting the scene for many memorable get-togethers with family and friends.

To the front of the home is a comfortable living room and home office with easy access to an additional powder room.

Upstairs is the accommodation zone featuring a sumptuous parents' retreat. Here, you can relax and unwind in this resort-style space, with its his-and-hers walk-in-robos and spa-inspired ensuite complementing the spacious sleeping quarters of this incredible sanctuary.





The straight-forward but cleverly-designed use of space on the upper level of this beautiful family home ensures the four additional bedrooms and large children's activity sit comfortably and allow for free-flowing living. A large family bathroom and separate powder room satisfy the needs of every member of your growing family.







# Saxonvale 42

				
4	2	2	1	2

12.580m width x 19.935m length

## Ground Floor

Family	5.7 x 5.5
Living	4.1 x 4.9
Dining	4.2 x 4.1
Study	3.5 x 3.3
Garage	5.5 x 5.8
Alfresco	4.7 x 4.0

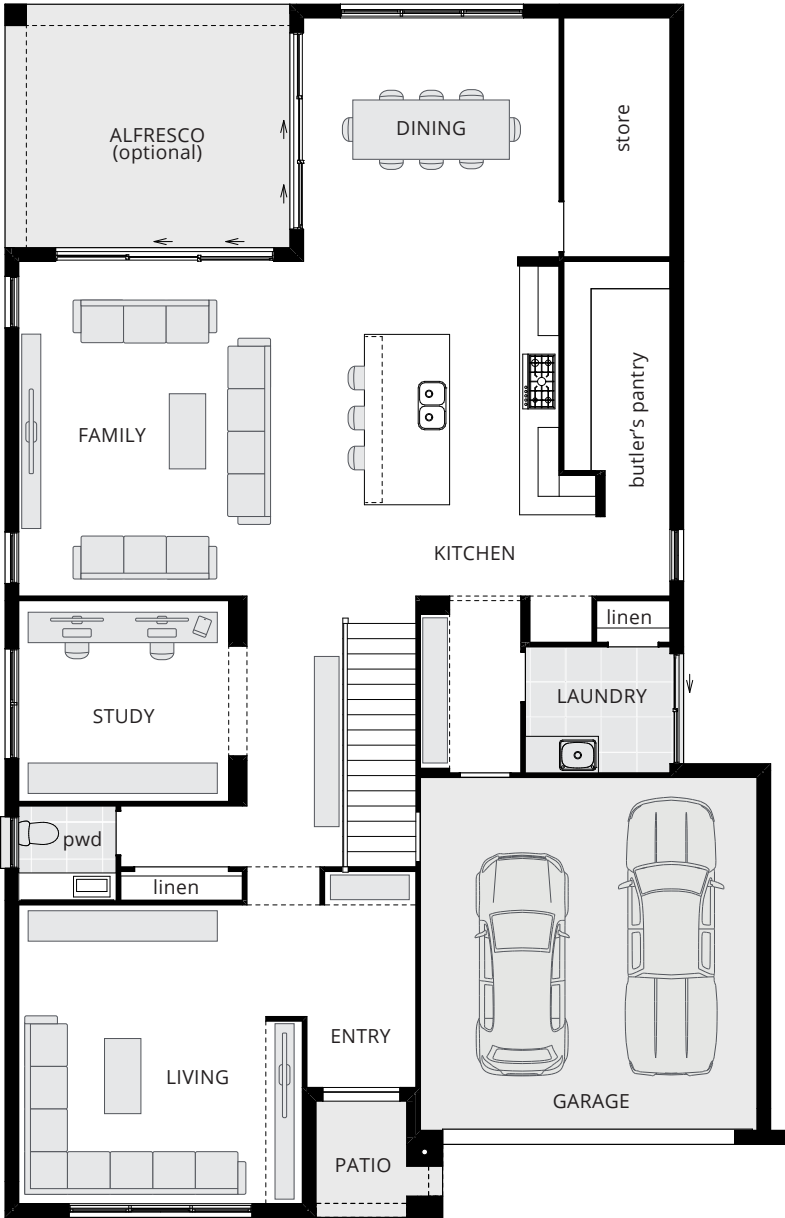
## First Floor

Master Suite	4.1 x 4.5
Bed 2	4.1 x 3.6
Bed 3	4.1 x 3.6
Bed 4	3.5 x 3.4
Activities	4.1 x 5.0



## Saxonvale 42 H-MDSSAX10DA

Floor plan depicts **Classic facade**.



GROUND FLOOR



FIRST FLOOR

# Saxonvale 42

## Upgrades

### Ground Floor

- Alfresco
- Alternate kitchen a layout (not shown)
- Alternate kitchen b layout including butler's pantry
- Alternate laundry layout
- Bi-fold door to dining
- Bi-fold door to family
- Bi-fold door in lieu of window to dining
- Butler's pantry (not shown)
- Guest bedroom and ensuite
- Laundry overhead cupboards 1600mm long (not shown)
- Mudroom bench seat with drawers and coat rack over (not shown)
- Picture window to butler's pantry
- Picture window to family
- Picture window to study (not shown)

### First Floor

- Alternate ensuite A layout including freestanding bath (not shown)
- Alternate ensuite B layout including freestanding bath (not shown)
- Feature screen to ensuite (only with alternate ensuite B layout) (not shown)
- Mirrored master suite wing (master suite to rear)
- Rear master suite with alternate ensuite A layout (not shown)
- Rear master suite with alternate ensuite B layout (not shown)



### Saxonvale 42 H-MDSSAX10DA

Floor plan depicts **Classic facade**.






GROUND FLOOR



FIRST FLOOR



# Saxonvale 40 ONE

				
5	2	2	1	2

12.380m width x 19.390m length

## Ground Floor

Family	5.8 x 5.5
Dining	4.0 x 4.7
Living	4.2 x 5.1
Study	3.3 x 3.0
Double Garage	5.5 x 5.5
Alfresco Cabana	4.7 x 3.5

## First Floor

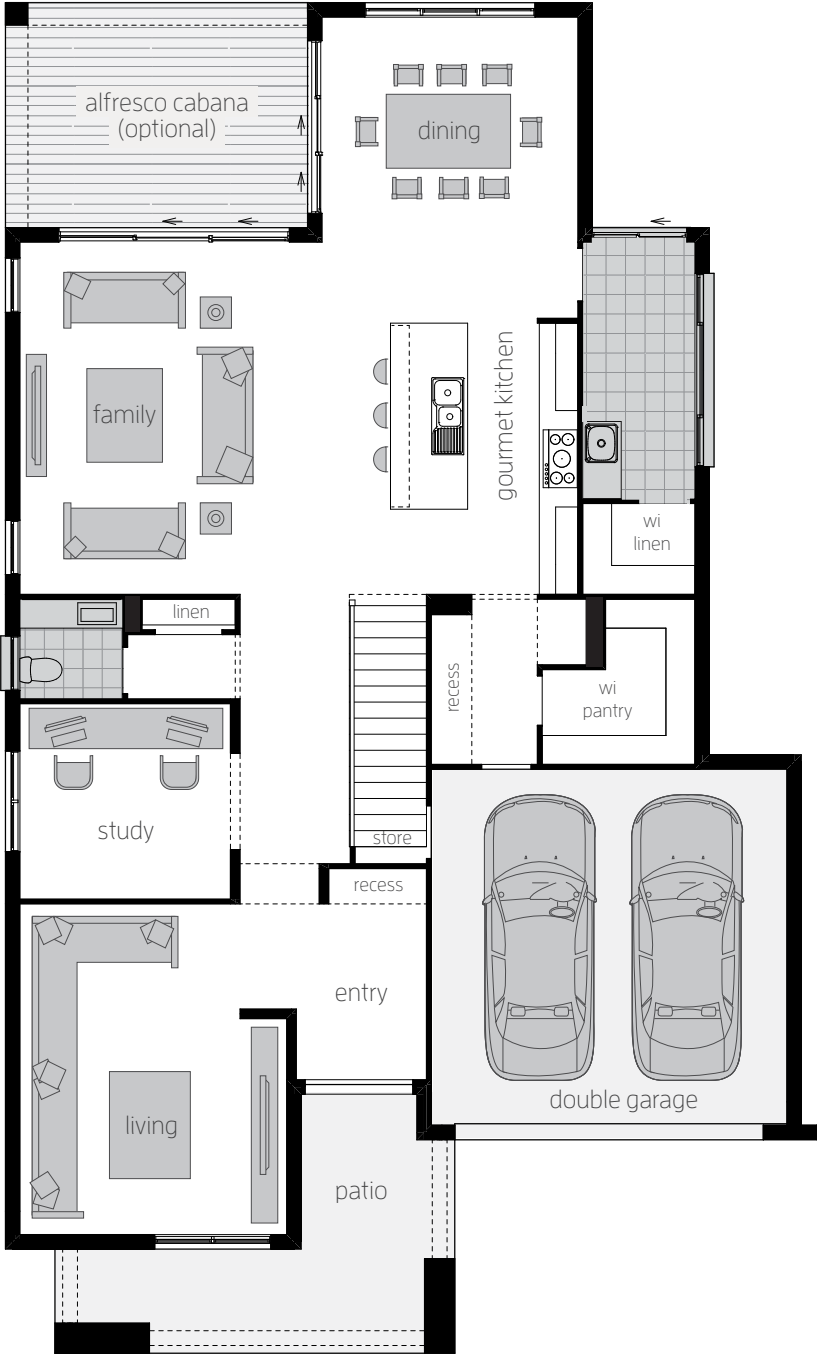
Master Suite	4.1 x 4.0
Bed 2	3.3 x 3.6
Bed 3	3.0 x 3.6
Bed 4	3.5 x 3.2
Bed 5	3.3 x 3.3
Children's Activity	4.2 x 4.9



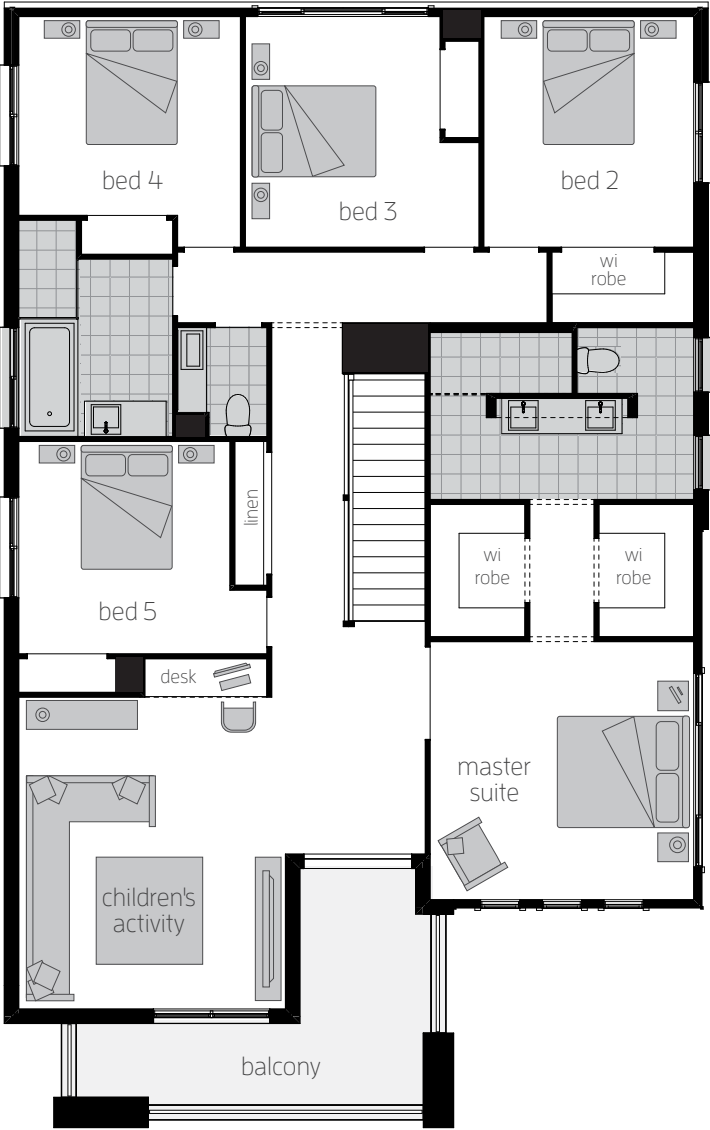
## Saxonvale 40 H-SAXCLAD16510

Floor plan depicts **Vantage facade**.





GROUND FLOOR



FIRST FLOOR

# Saxonvale 40 ONE

## Upgrades

### Ground Floor

Alfresco Cabana 4.7m x 3.5m

Alternate Kitchen layout with one  
appliance tower

Alternate Powder Room layout with shower

Bi-fold door to Dining rear wall (not shown),  
Dining side wall and Family

Butler's Pantry

Guest room in lieu of Home Office

Laundry bench with overhead cupboards

Picture window to Dining rear wall

### First Floor

Alternate Ensuite layout with bathtub

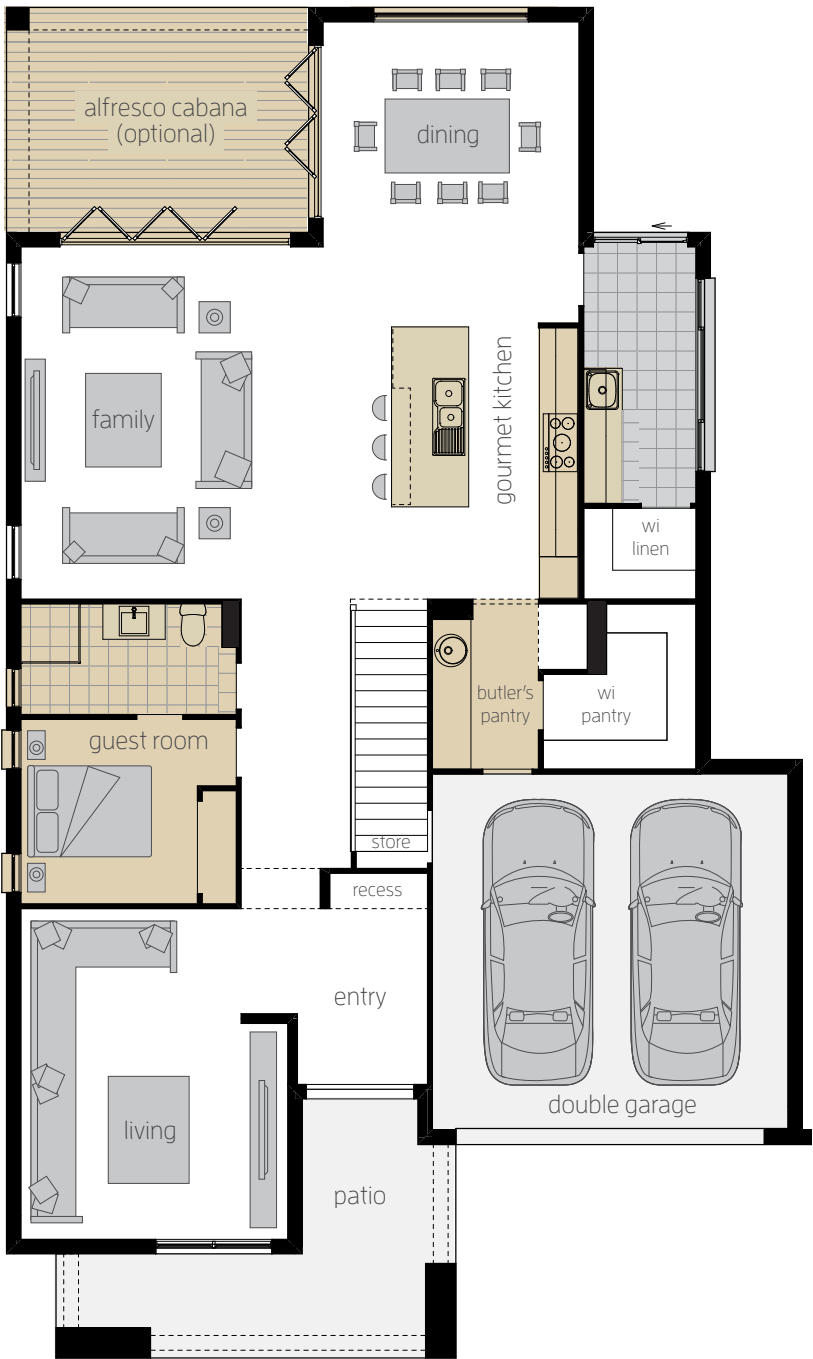
Dual Ensuited in lieu of Bed 3

Freestanding bathtub to alternate Ensuite

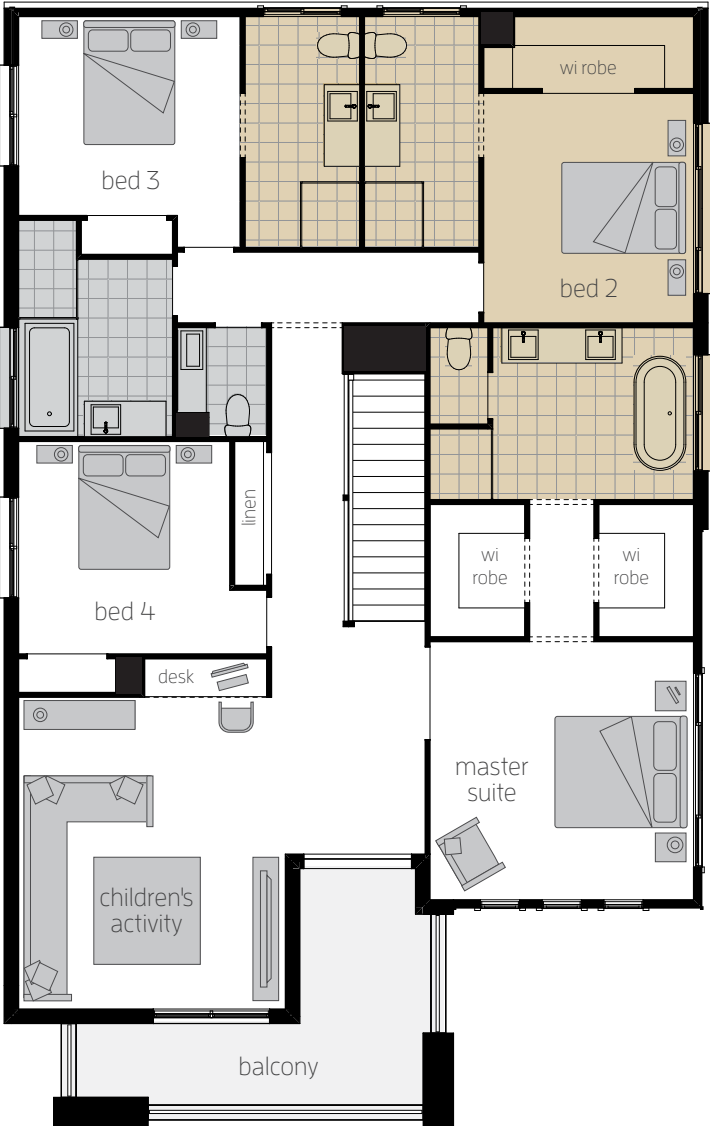


### Saxonvale 40 H-SAXCLAD16510

Floor plan depicts **Vantage facade**.






GROUND FLOOR



FIRST FLOOR

# Saxonvale 40 TWO

				
4	2	2	1	2

12.380m width x 19.390m length

### Ground Floor

Family	5.8 x 5.5
Living	4.2 x 5.1
Dining	4.0 x 4.7
Study	3.3 x 3.0
Double Garage	5.5 x 5.5
Alfresco Cabana	4.7 x 3.5

### First Floor

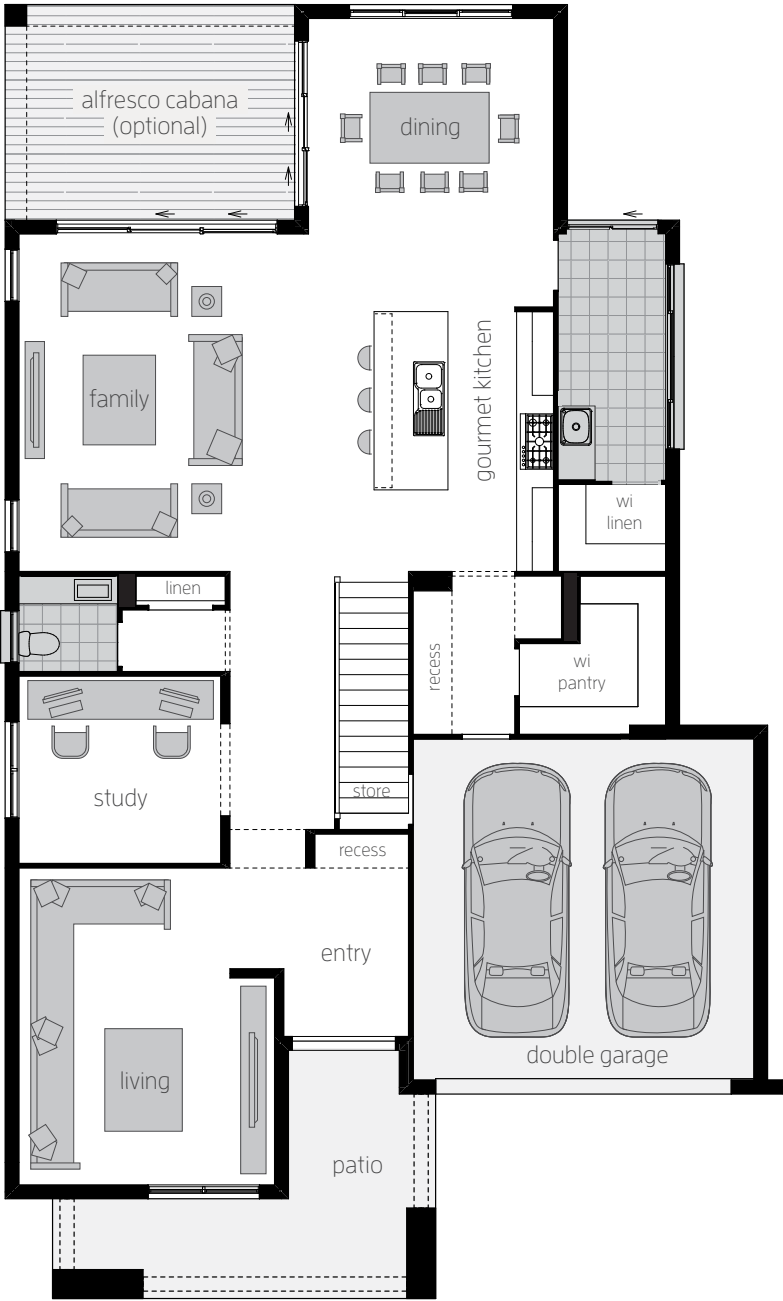
Master Suite	5.1 x 4.8
Bed 2	3.5 x 3.5
Bed 3	3.9 x 3.3
Bed 4	4.1 x 3.4
Children's Activity	4.2 x 4.9



### Saxonvale 40 TWO H-SAXCLAD204600

Floor plan depicts **Vantage facade**.





# Saxonvale 40 TWO

## Upgrades

### Ground Floor

Alfresco Cabana 4.7m X 3.5m

Alternate Kitchen layout with one appliance tower

Alternate Powder Room layout with shower

Bi-fold door to Dining rear wall, Dining sidewall and Family

Butler's Pantry

Guest Bedroom in lieu of Study

Laundry bench with overhead cupboards

Picture window to Dining rear wall (not shown)

### First Floor

Alternate Ensuite layout including bathtub (not shown)

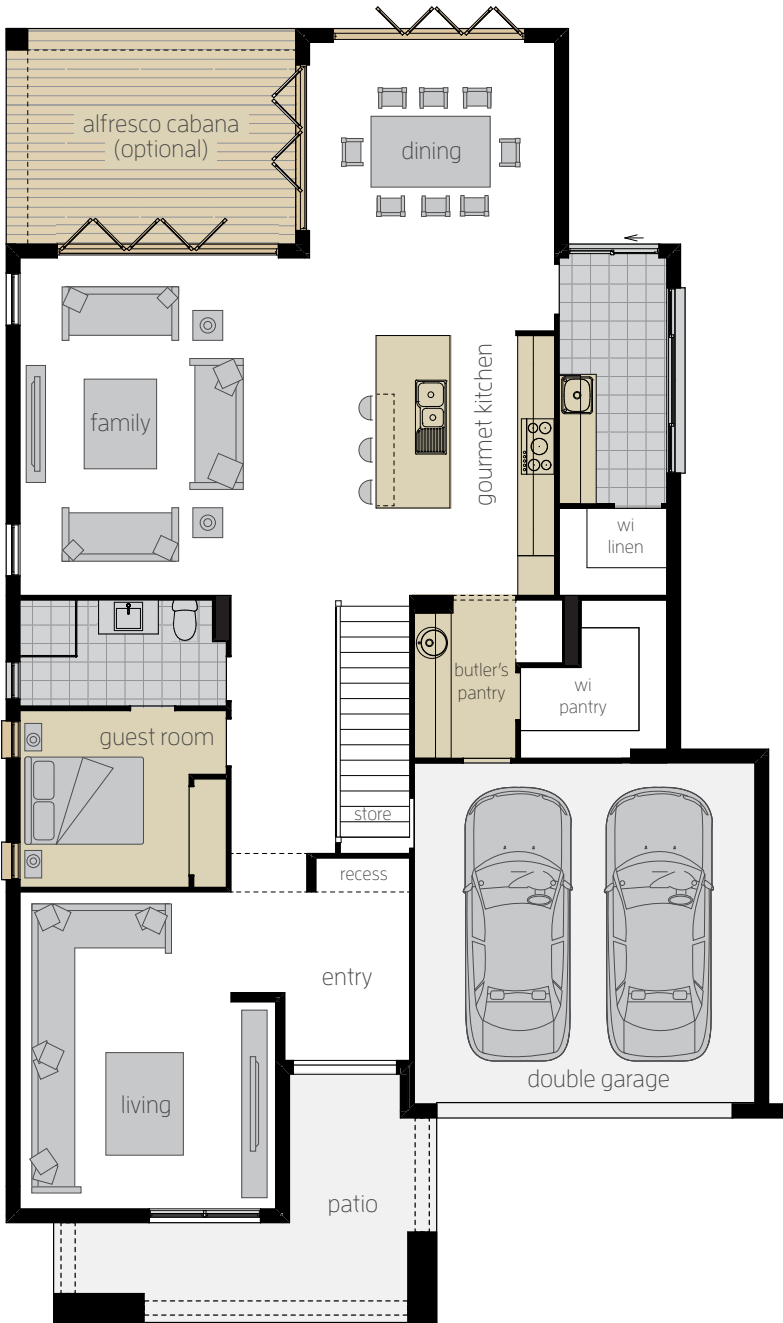
Freestanding bath to alternate Ensuite

Freestanding bathtub to alternate Ensuite

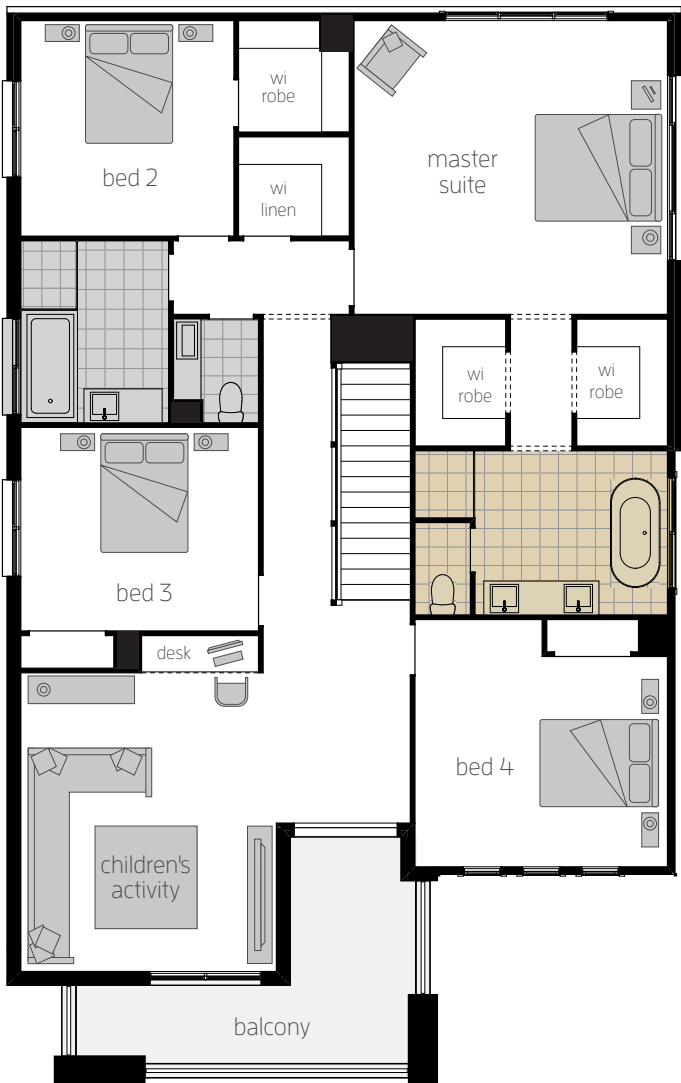


### Saxonvale 40 H-SAXCLAD16510

Floor plan depicts **Vantage facade**.






GROUND FLOOR



FIRST FLOOR

# Saxonvale 40 THREE

				
4	2	2	1	2

12.620m width x 19.390m length

## Ground Floor

Family	5.7 x 5.5
Living	4.2 x 5.1
Dining	4.0 x 4.7
Study	3.8 x 3.0
Double Garage	5.5 x 5.5
Alfresco Cabana	4.7 x 3.5

## First Floor

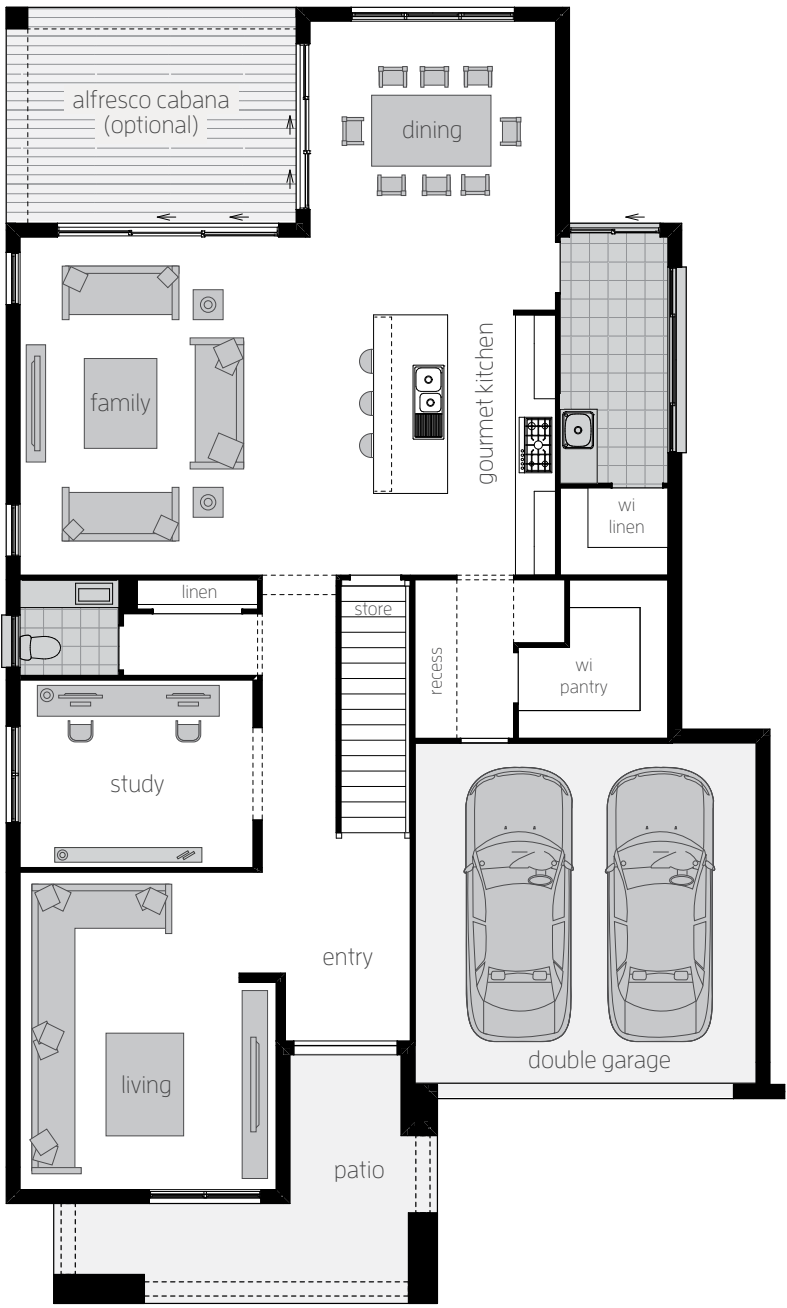
Master Suite	6.4 x 4.0
Bed 2	4.1 x 3.2
Bed 3	4.4 x 3.4
Bed 4	3.5 x 3.4
Children's Activity	4.2 x 3.5
Parent's Retreat	4.2 x 3.8



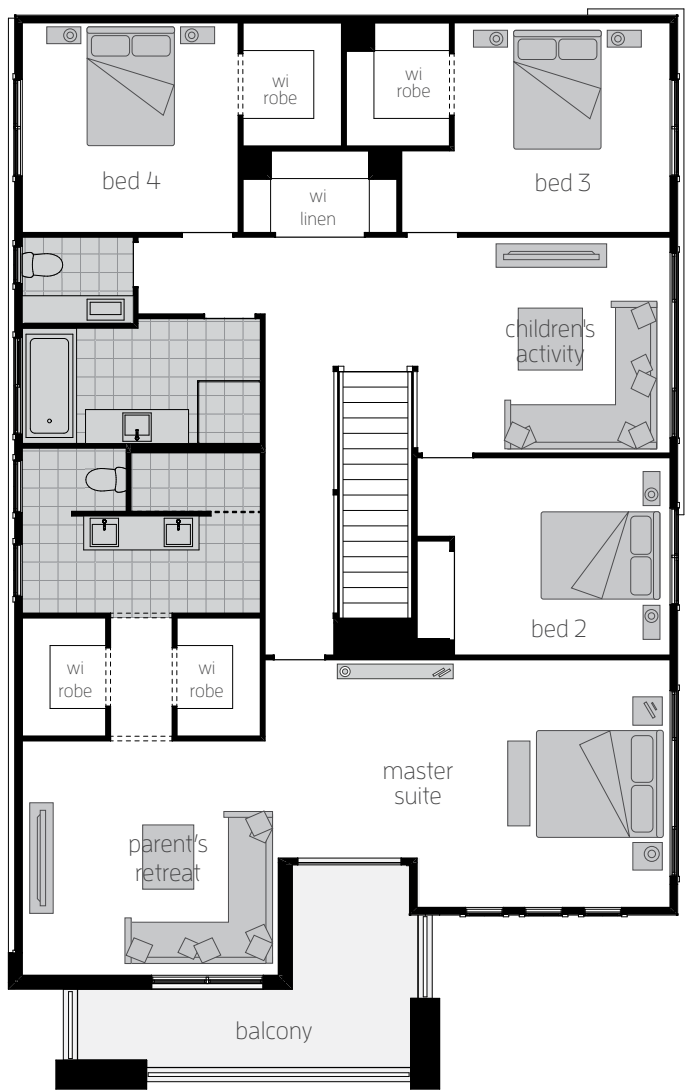
## Saxonvale 40 THREE H-SAXCLAD21490

Floor plan depicts **Vantage facade**.





GROUND FLOOR



FIRST FLOOR

# Saxonvale 40 THREE

## Ground Floor

Alfresco Cabana 4.7m X 3.5m

Alternate Kitchen layout with one appliance tower

Alternate Powder Room layout with shower

Bi-fold door to Dining rear wall, Dining side wall and Family rear wall

Butler's Pantry

Guest Bedroom in lieu of Study

Laundry bench with overhead cupboards 2200mm long

Picture window to Dining rear wall (not shown)

## First Floor

Alternate Ensuite layout including hob bath (not shown)

Freestanding Bath to alternate Ensuite layout

Fifth Bedroom in lieu of Children's Activity



## Saxonvale 40 THREE H-SAXCLAD21490

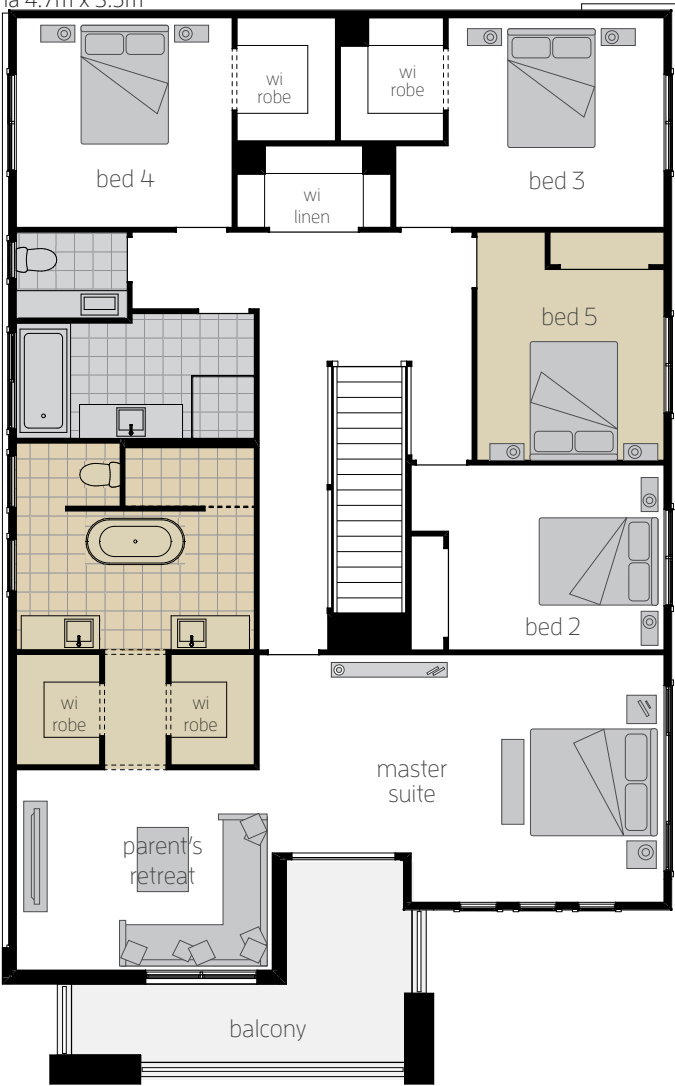
Floor plan depicts **Vantage facade**.

15m





Minimum Lot Width



Alfresco Cabana 4.7m x 3.5m



# Saxonvale 36 ONE

				
5	2	2	1	2

11.970m width x 18.440m length

## Ground Floor

Family	4.9 x 5.3
Dining	3.4 x 4.3
Living	4.1 x 4.6
Study	3.0 x 3.0
Double Garage	5.5 x 5.5
Alfresco Cabana	3.9 x 3.2

## First Floor

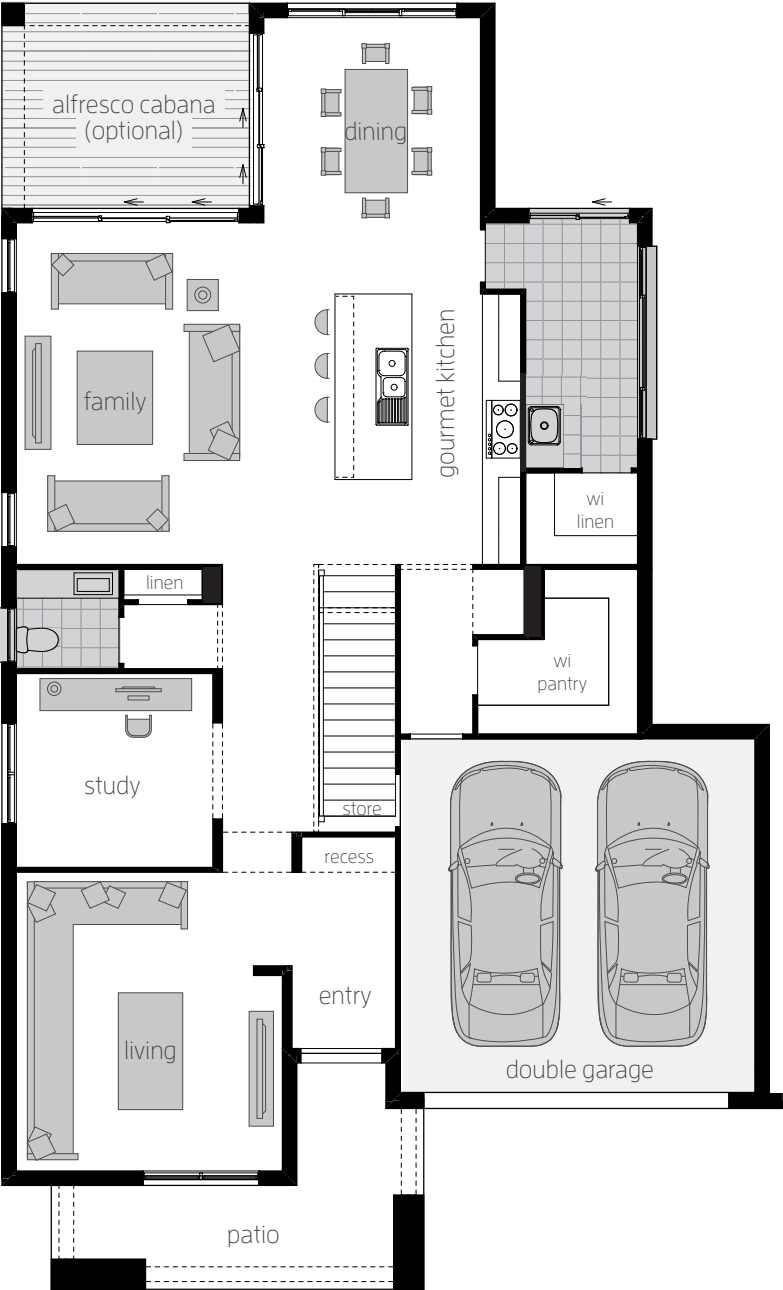
Master Suite	3.7 x 4.0
Bed 2	3.0 x 3.5
Bed 3	3.0 x 3.3
Bed 4	3.0 x 3.3
Bed 5	3.0 x 3.3
Children's Activity	4.1 x 4.0



## Saxonvale 36 H-SAXCLAD17520

Floor plan depicts **Vantage facade**.





GROUND FLOOR



FIRST FLOOR

# Saxonvale 36 ONE

## Upgrades

### Ground Floor

Alfresco Cabana 3.9m x 3.2m

Alternate Kitchen layout with one appliance tower

Alternate Powder Room layout with shower

Bi-fold door to Dining rear wall, Dining side wall and Family

Butler's Pantry

Laundry bench with overhead cupboards

Picture window to Dining rear wall (not shown)

Splashback window to Butler's Pantry

### First Floor

Alternate Ensuite layout with bathtub

Dual Ensuites in lieu of Bed 3

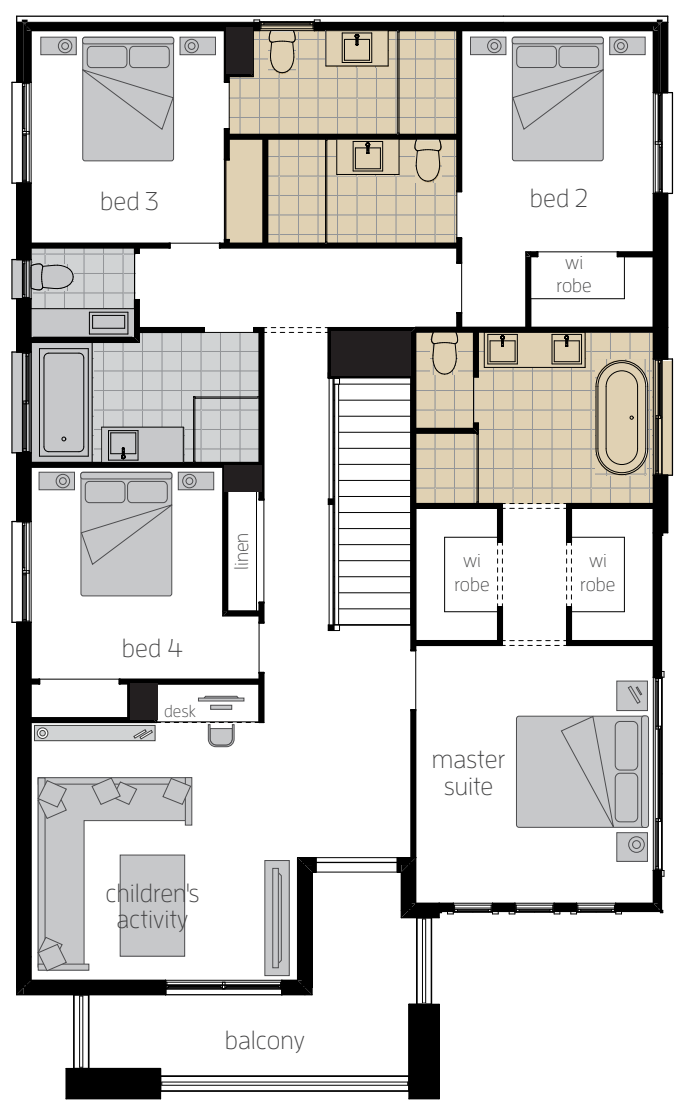


### Saxonvale 36 H-SAXCLAD17520

Floor plan depicts **Vantage facade**.






GROUND FLOOR



FIRST FLOOR

# Saxonvale 36 TWO

				
4	2	2	1	2

11.970m width x 18.330m length

## Ground Floor

Family	5.0 x 5.3
Living	4.2 x 4.7
Dining	3.4 x 4.3
Study	3.1 x 3.0
Double Garage	5.5 x 5.5
Alfresco Cabana	3.9 x 3.2

## First Floor

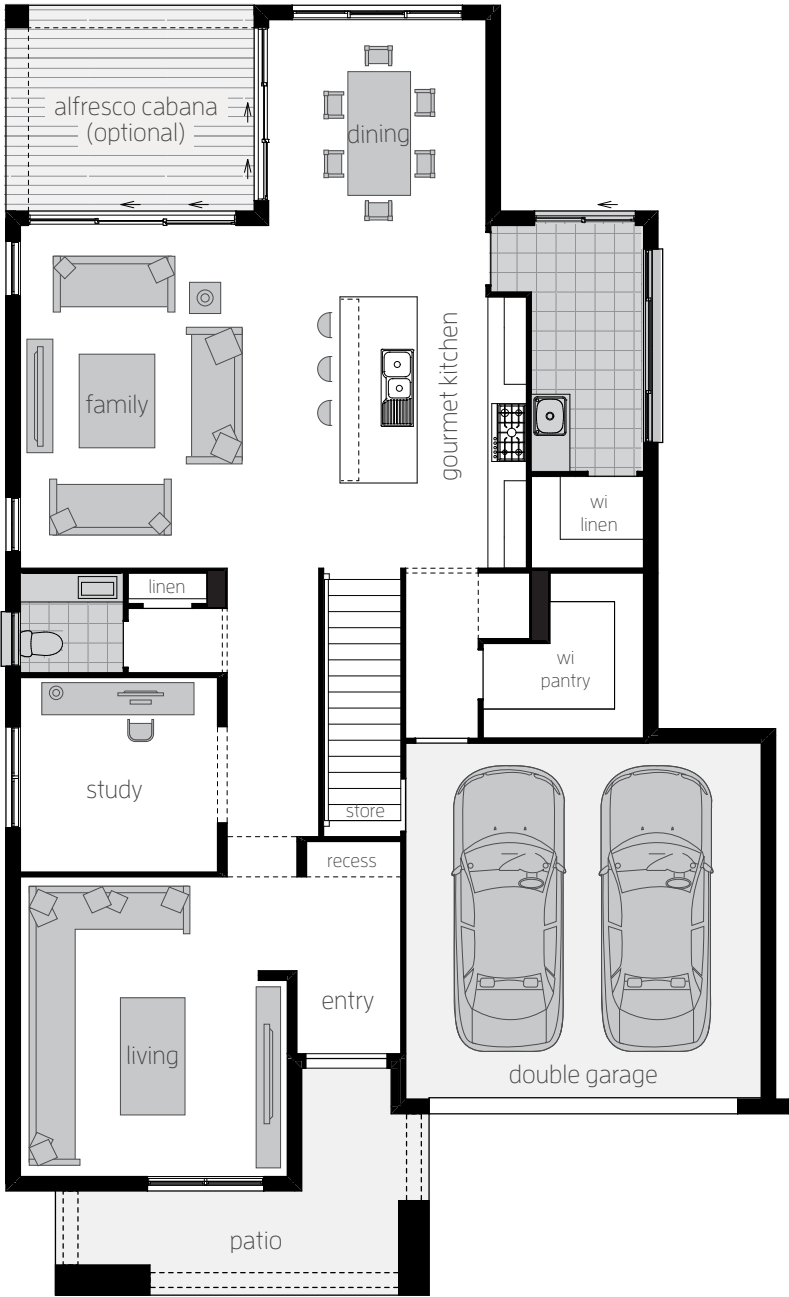
Master Suite	4.7 x 4.6
Bed 2	3.3 x 3.3
Bed 3	3.6 x 3.3
Bed 4	3.7 x 3.4
Children's Activity	4.2 x 4.0



## Saxonvale 36 TWO H-SAXCLAD20450

Floor plan depicts **Vantage facade**.





GROUND FLOOR



FIRST FLOOR

# Saxonvale 36 TWO

## Upgrades

### Ground Floor

Alfresco Cabana 3.9m x 3.2m

Alternate Kitchen layout with one appliance tower

Bi-fold door to Dining rear wall, Dining side wall and Family

Butler's Pantry

Laundry bench with overhead cupboards

Picture window to Dining rear wall (not shown)

Alternate Powder room layout with shower

Splashback window to Butler's Pantry

### First Floor

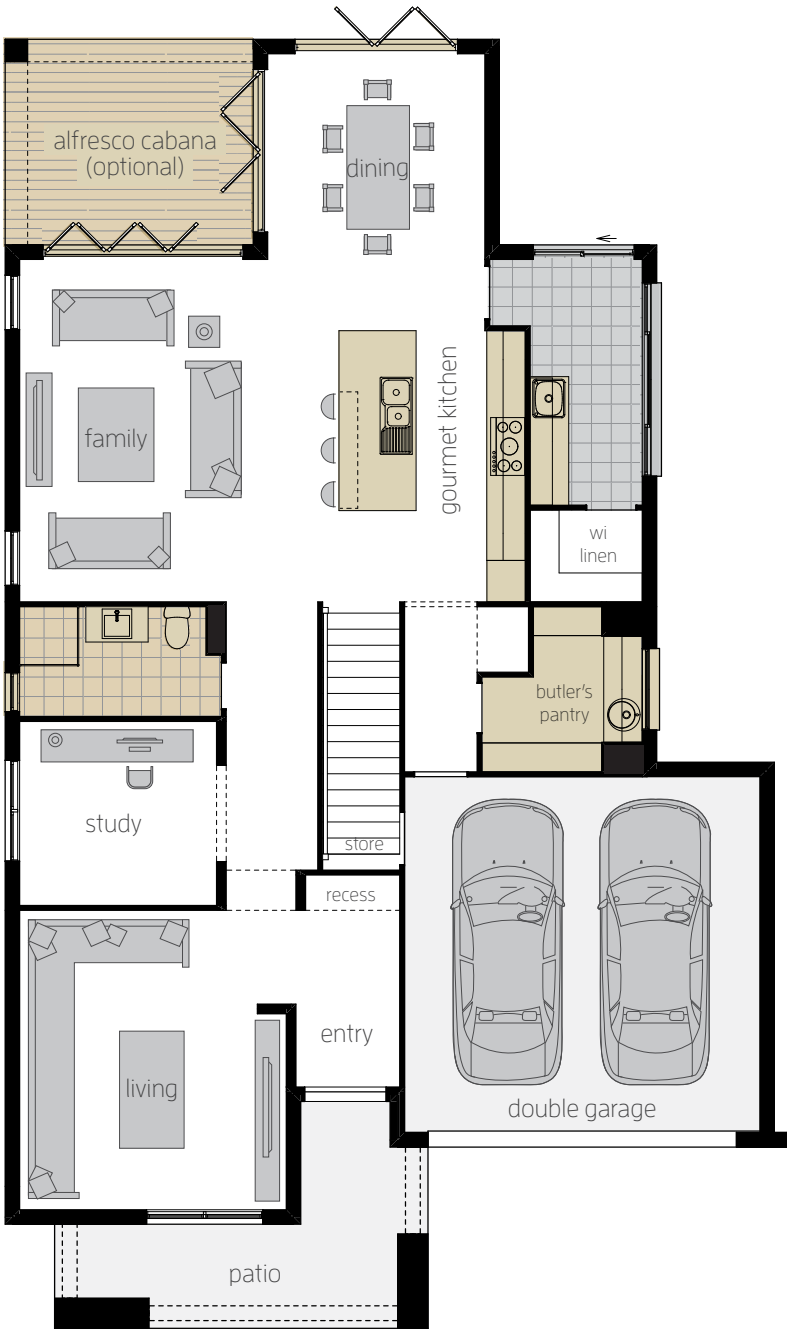
Alternate Ensuite layout including bathtub (not shown)

Freestanding bath to alternate Ensuite



### Saxonvale 36 TWO H-SAXCLAD20450

Floor plan depicts **Vantage facade**.






GROUND FLOOR



FIRST FLOOR

# Saxonvale 36 THREE

				
4	2	2	1	2

12.170m width x 18.440m length

## Ground Floor

Family	5.0 x 5.3
Living	4.2 x 4.7
Dining	3.4 x 4.3
Study	3.5 x 3.0
Double Garage	5.5 x 5.5
Alfresco Cabana	3.9 x 3.2

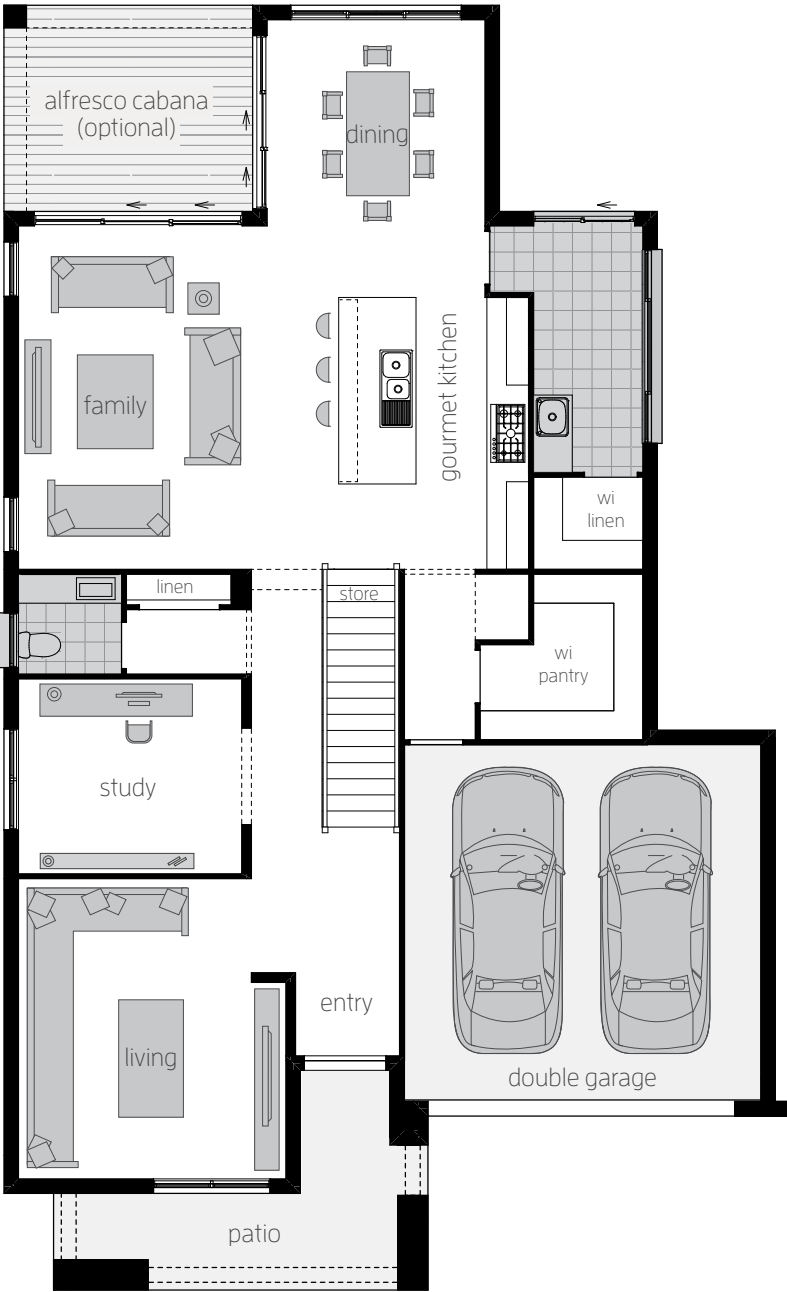
## First Floor

Master Suite	5.5 x 4.0
Bed 2	3.7 x 3.2
Bed 3	4.3 x 3.1
Bed 4	3.5 x 3.1
Children's Activity	3.7 x 3.5
Parent's Retreat	4.2 x 3.4

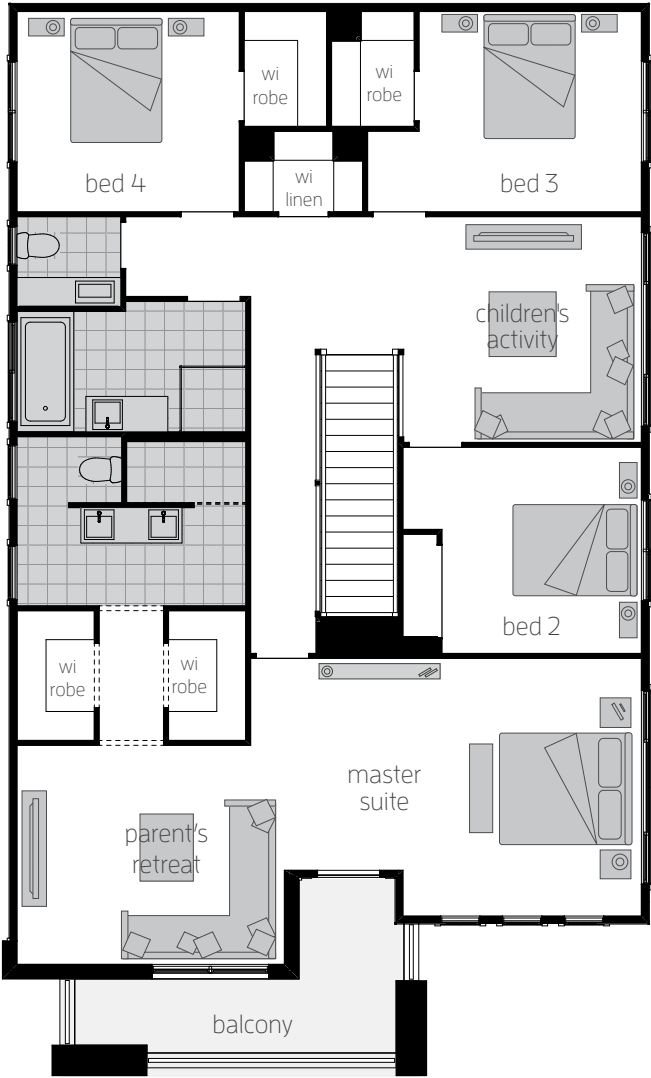


## Saxonvale 36 THREE H-SAXCLAD21480

Floor plan depicts **Vantage facade**.



GROUND FLOOR



FIRST FLOOR



# Saxonvale 36 THREE

## Upgrades

### Ground Floor

Alfresco Cabana 3.9m x 3.2m

Alternate Kitchen layout with one appliance tower

Bi-fold door to Dining rear wall, Dining side wall and Family

Butler's Pantry

Guest bedroom in lieu of Study

Laundry bench with overhead cupboards 2000mm long

Picture window to Dining rear wall (not shown)

Alternate Powder room layout with shower

Splashback window to Butler's Pantry

### First Floor

Alternate Ensuite layout including bathtub (not shown)

Freestanding bath to alternate Ensuite layout

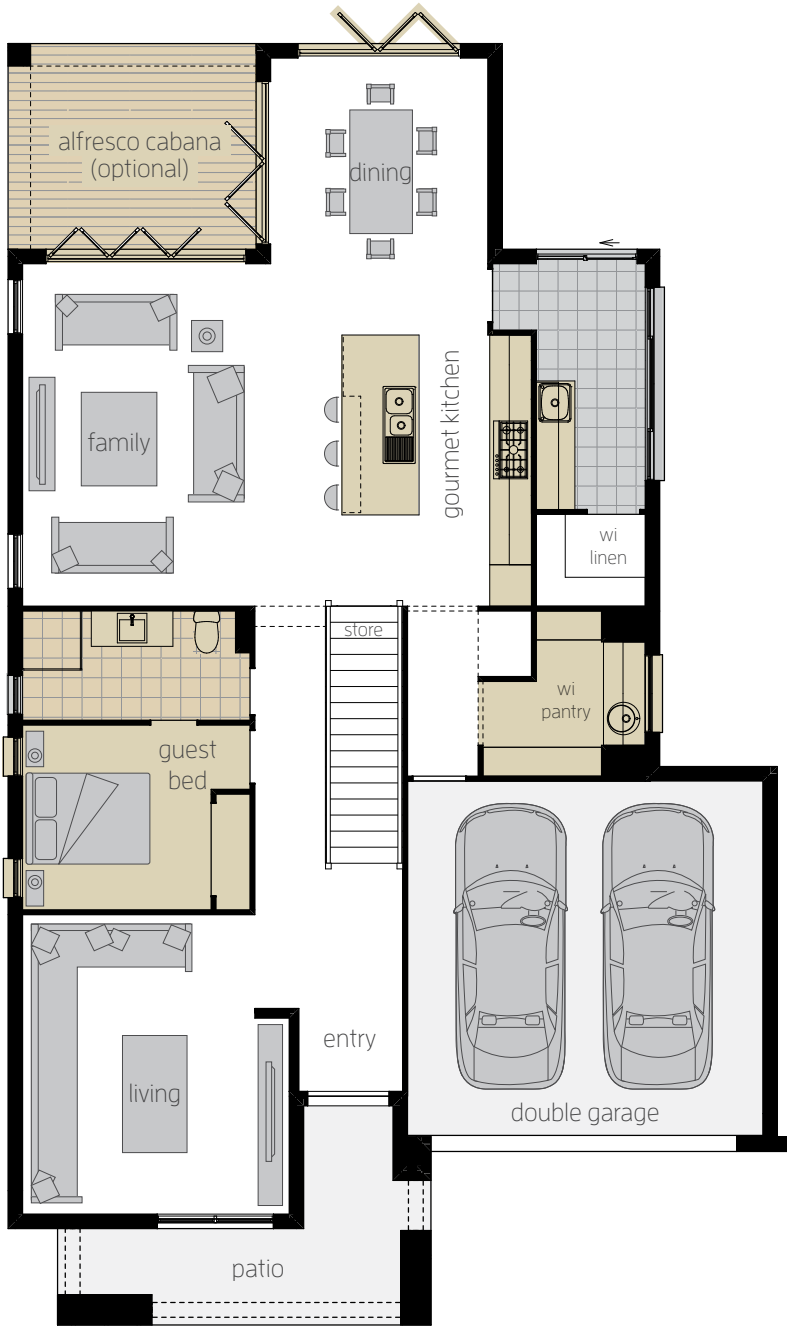


## Saxonvale 36 THREE H-SAXCLAD21480

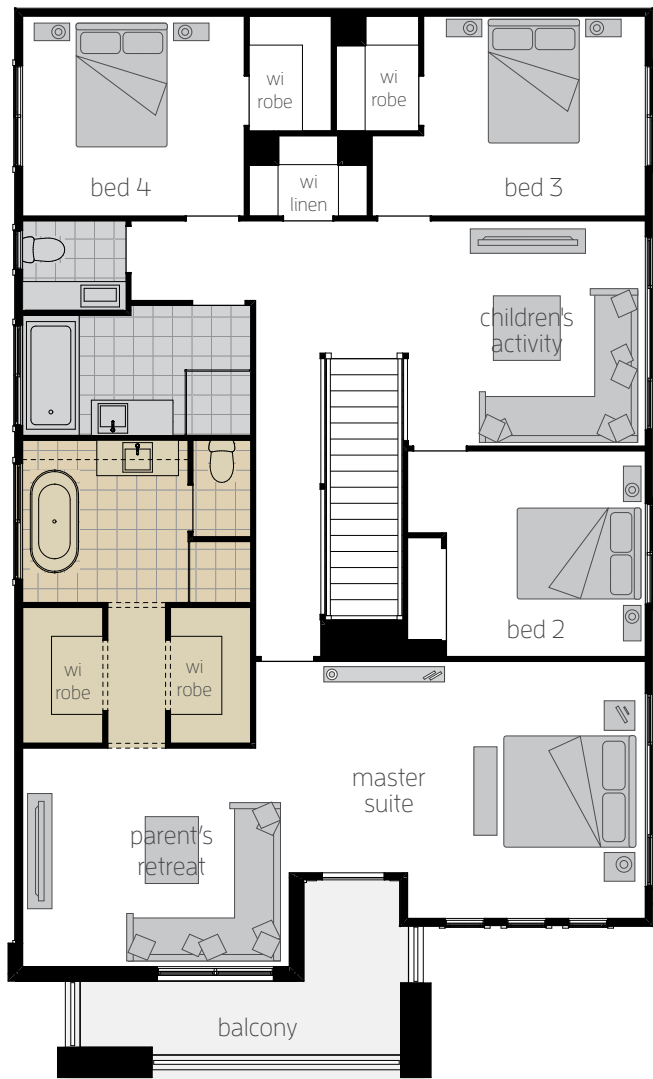
Floor plan depicts **Vantage facade**.

15m

Minimum Lot Width



GROUND FLOOR



FIRST FLOOR

# Saxonvale Facades



VANTAGE  
F-SAXVNTG01





**HAMPTONS B**  
F-SAXHMPB01



**OSPREY**  
F-SAXOSPY01



**EMERSON**  
F-SAXEMSN01



**ALKINA**  
F-SAXALKN01



# Saxonvale Facades







LANGLEY  
F-SAXLGLY01





A stylish architectural design that's perfectly balanced.

# Saxonvale 33 ONE

				
4	2	2	1	2

10.800m width x 19.550m length

## Ground Floor

Family	4.2 x 5.3
Living	3.4 x 5.0
Dining	3.4 x 4.2
Study	2.3 x 3.0
Double Garage	5.5 x 5.5
Alfresco Cabana	3.8 x 3.2

## First Floor

Master Suite	5.7 x 4.3
Parent's Retreat	3.4 x 3.2
Bed 2	3.1 x 3.2
Bed 3	2.9 x 3.2
Bed 4	3.1 x 3.0
Children's Activity	3.2 x 3.8

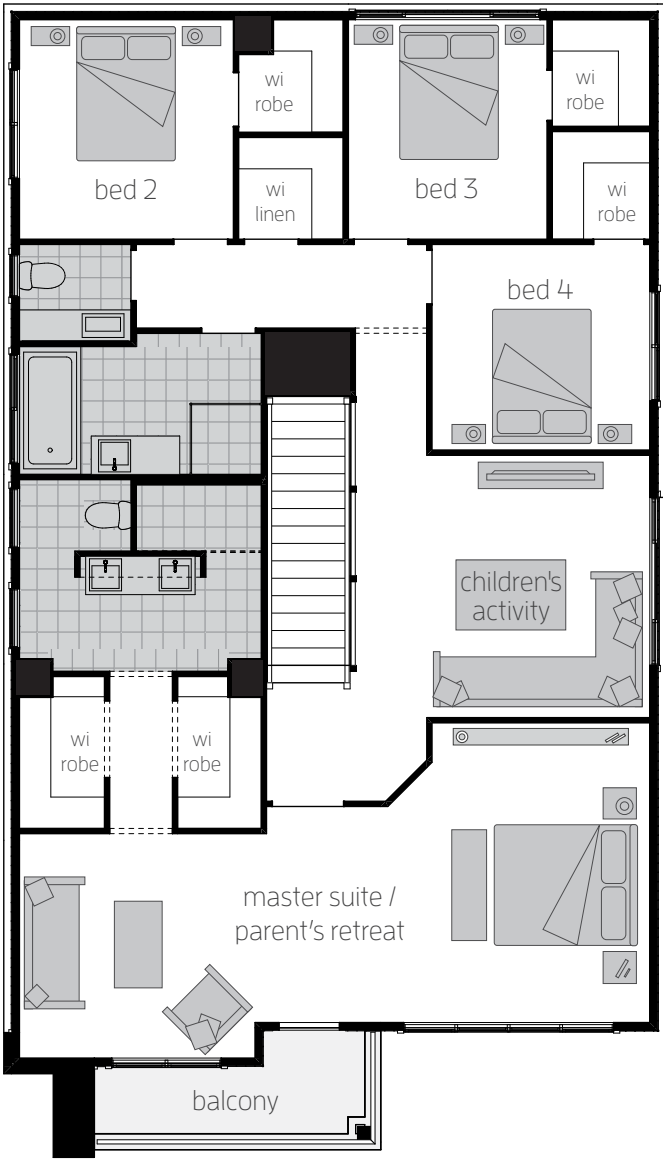


## Saxonvale 33 One H-SAXCLAD20430

Floor plan depicts **Kuta facade**.



GROUND FLOOR



FIRST FLOOR

# Saxonvale 33 ONE

## Upgrades

### Ground Floor

Alfresco Cabana 3.8m x 3.2m

Alternate Kitchen layout with one appliance tower

Bi-fold door to Dining rear wall, Dining side wall and Family

Butler's Pantry

Laundry bench with overhead cupboards

Picture window to Dining rear wall (not shown)

### First Floor

Alternate Ensuite layout including bathtub (not shown)

Bed 5 in lieu of Children's Activity

Freestanding bath to alternate Ensuite



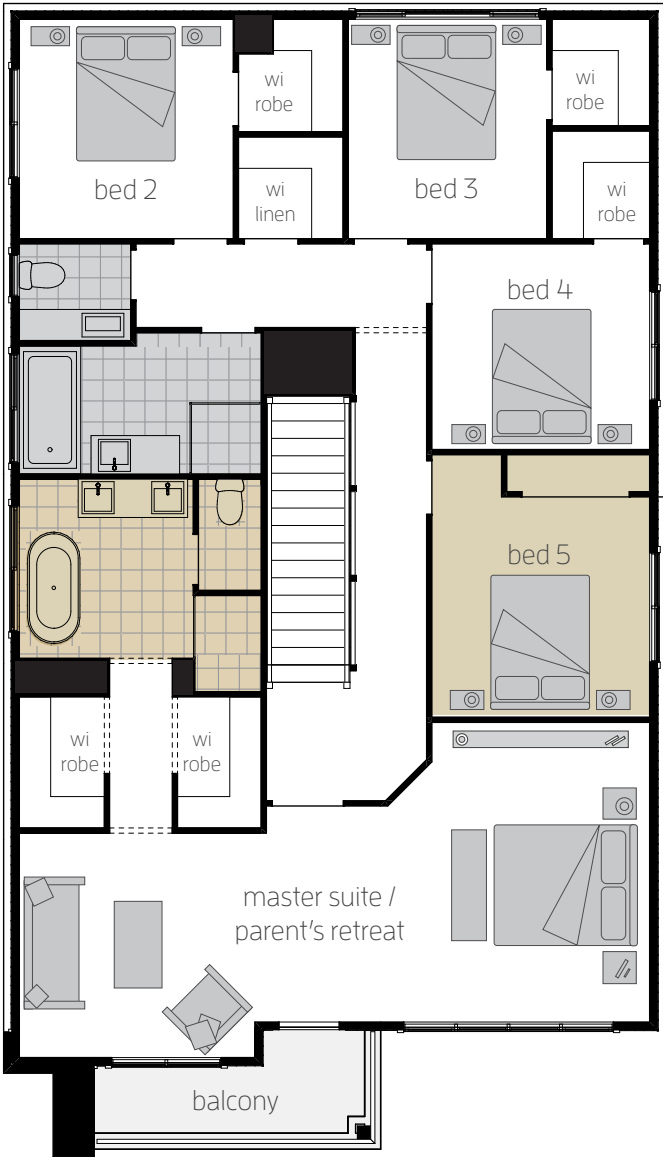
## Saxonvale 33 One H-SAXCLAD20430

Floor plan depicts **Kuta facade**.









GROUND FLOOR



FIRST FLOOR



# Saxonvale 33 TWO

				
4	2	2	2	2

10.800m width x 19.550m length

## Ground Floor

Family	4.2 x 5.3
Living	3.4 x 5.0
Dining	3.4 x 4.2
Study	2.3 x 3.0
Double Garage	5.5 x 5.5
Alfresco Cabana	3.8 x 3.2

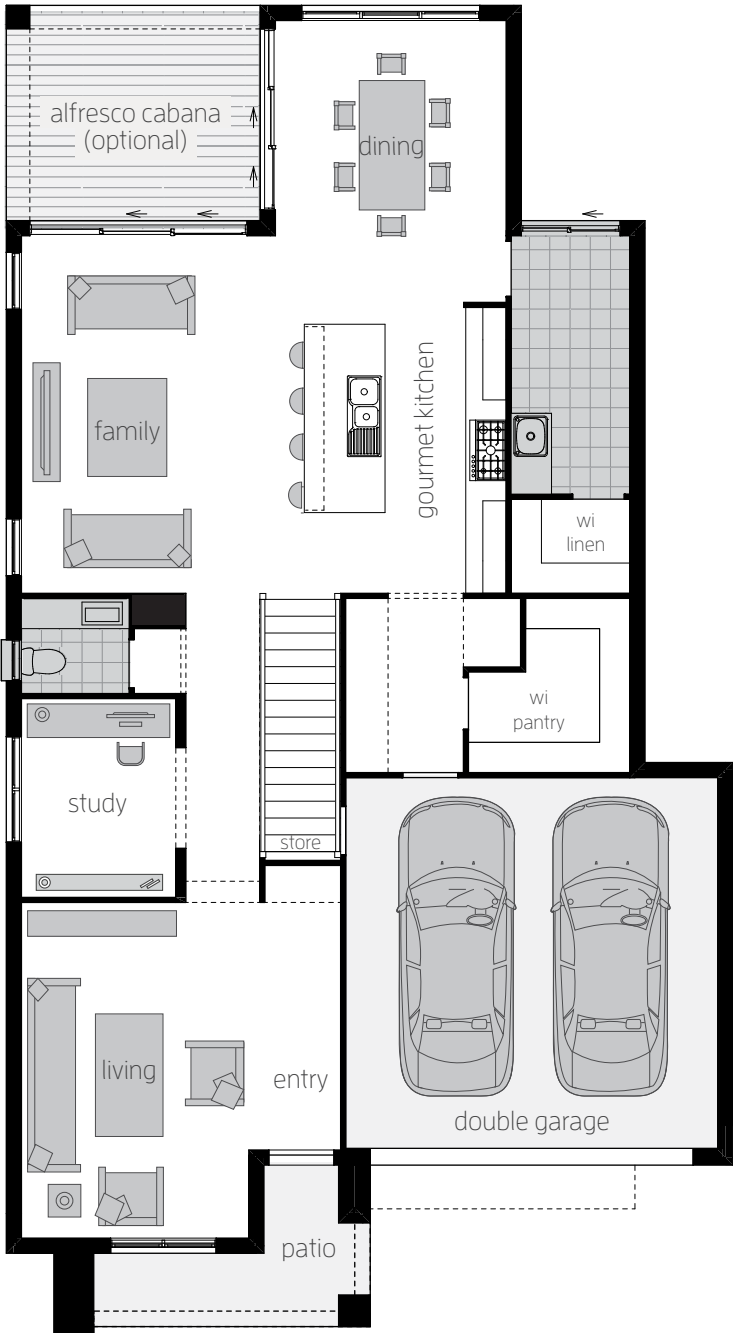
## First Floor

Master Suite	4.5 x 3.8
Bed 2	3.5 x 3.9
Bed 3	3.4 x 3.5
Bed 4	3.1 x 3.8
Children's Activity	5.5 x 4.4
Study Nook	1.7 x 2.2

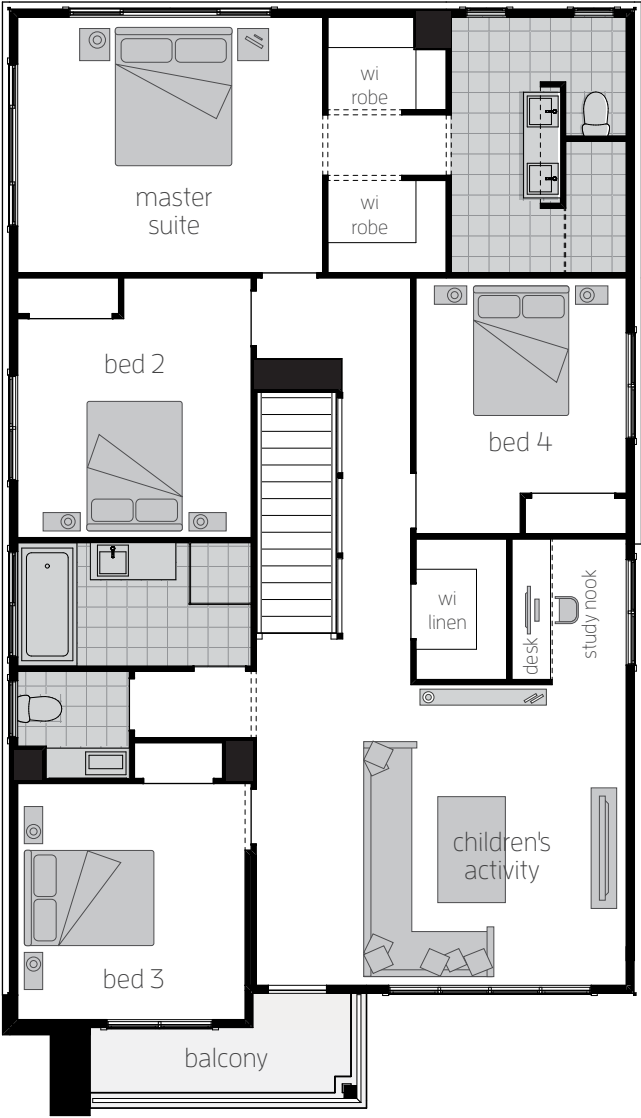


## Saxonvale 33 Two H-SAXCLAD20440

Floor plan depicts **Kuta facade**.



GROUND FLOOR



FIRST FLOOR

# Saxonvale 33 TWO

## Upgrades

### Ground Floor

Alfresco Cabana 3.8m x 3.2m

Alternate Kitchen layout with one appliance tower

Bi-fold door to Dining rear wall, Dining side wall and Family

Butler's Pantry

Laundry bench with overhead cupboards

Picture window to Dining rear wall (not shown)

### First Floor

Alternate Ensuite layout including bathtub (not shown)

Freestanding bath to alternate Ensuite

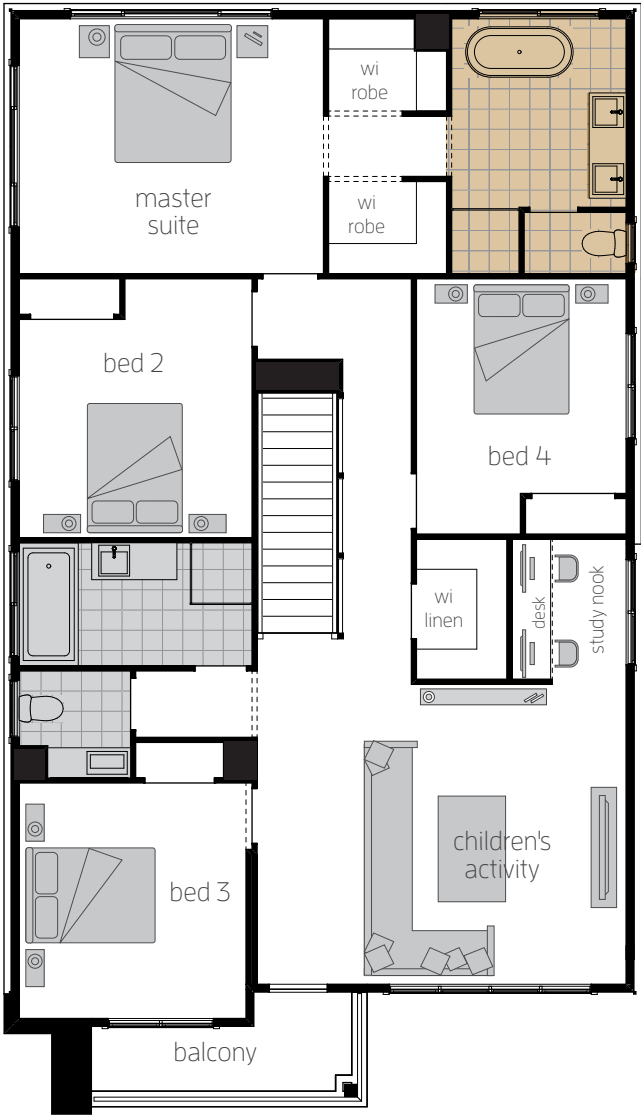


## Saxonvale 33 Two H-SAXCLAD20440

Floor plan depicts **Kuta facade**.






GROUND FLOOR



FIRST FLOOR

# Saxonvale 33 THREE

				
4	2	2	1	2

10.800m width x 19.550m length

## Ground Floor

Family	4.2 x 5.3
Living	3.4 x 5.0
Dining	3.4 x 4.2
Study	2.3 x 3.0
Double Garage	5.5 x 5.5
Alfresco Cabana	3.8 x 3.2

## First Floor

Master Suite	5.7 x 4.0
Parent's Retreat	3.4 x 3.2
Bed 2	3.1 x 3.6
Bed 3	3.5 x 3.0
Bed 4	3.5 x 3.0
Children's Activity	3.2 x 3.6



## Saxonvale 33 Three H-SAXCLAD20470

Floor plan depicts **Kuta facade**.



### Minimum Lot Width



# Saxonvale 33 THREE

## Upgrades

### Ground Floor

Alfresco Cabana 3.8m x 3.2m

Alternate Kitchen layout with one appliance tower

Bi-fold door to Dining rear wall, Dining side wall and Family

Butler's Pantry

Laundry bench with overhead cupboards

Picture window to Dining rear wall (not shown)

### First Floor

Alternate Ensuite layout including bathtub (not shown)

Bed 5 in lieu of Children's Activity

Freestanding bath to alternate Ensuite



### Saxonvale 33 Three H-SAXCLAD20470

Floor plan depicts **Kuta facade**.

### Minimum Lot Width





# Saxonvale Facades



ALKINA  
F-SAXALKN01





LONG ISLAND  
F-SAXLISD01



# Saxonvale Facades



HALLIDAY  
F-SAXHLDY01





**HAMPTON**  
F-SAXHMPT01



**KUTA**  
F-SAXKUTA01



**CLASSIC**  
F-SAXCLAS01



**GREENPORT**  
F-SAXGRPT01



1300 555 382

[mcdonaldjoneshomes.com.au](http://mcdonaldjoneshomes.com.au)

Find us on



IMPORTANT NOTICE Images of facades shown are a guide only. Material finishes, dimensions and colours shown are purely an expression of the artist and are subject to change. Please refer to our current price list and specifications for facade finishes allowed in published price. Garage doors are panel lift doors. Garage door glazing is an additional cost. Images in this brochure including actual photographs and rendered imagery may depict fixtures, finishes, and features not supplied by McDonald Jones such as furnishings, internal and external fireplaces, landscaping, plants, decking, water features and swimming pools. Accordingly, published prices do not include the supply of any of these items. Images may also depict optional variations to the home design which incur additional costs such as window furnishings, window pelmets, light fittings such as pendant and down lights, front paths, driveways, fencing, barbecues, floor coverings, rendered external walls, upgrade bannisters, and upgraded kitchen/ bathroom layouts or finishes. Images may depict homes from other McDonald Jones design ranges and are used for illustrative purposes. Floor plans and room dimensions may differ slightly depending on your chosen facade (for example, window locations may differ with different facades). Plans are not shown to scale, and all measurements are approximate only. Sliding windows may not open in direction shown. Block widths noted are approximate and suitability may vary by Council (DCP) or Housing Code (CDC) requirements. Title widths have been rounded up so some block widths required could be less. Deleting parapet walls from facades will assist in fitting your house on a lesser sized block. \*Assuming zero lot boundary. Please discuss your block requirements with our Building and Design Consultants. McDonald Jones reserves the right to modify designs or specifications without notice. For detailed home pricing, including details about the standard inclusions for the house and charges for optional variations, please talk to one of our Building and Design Consultants. NSW: McDonald Jones Homes Pty Ltd ABN 82 003 687 232 – NSW BLN: 41628 T/A McDonald Jones Homes - NSW Architect Reg No. 4234. ACT: McDonald Jones Homes (Canberra) Pty Ltd ABN 64 150 533 298 - ACT BLN: 20121296 - ACT Reg No. 2470. © McDonald Jones Homes Pty Ltd. All rights reserved. No part of this brochure may be reproduced, stored in a retrieval system or transmitted in any form or by any means without the prior written permission of McDonald Jones Homes. MCDONALD JONES TWO STOREY – SAXONVALE EDITION 4. 8.6.22

