



mcDonald jones

FIND YOURSELF AT HOME

# Lancaster



2S  
two storey

# Lancaster

## Effortless luxury in the Lancaster.

The architectural design of the Lancaster offers many stylish spaces that encourage flow and add effortless luxury to your daily life.

You'll be drawn into the Lancaster with a sense of excitement and wonder with contemporary elements that greet you upon entry. The stylish staircase, at the entry, offers you the option to retreat directly up to the peaceful accommodation level or follow the flow and be tempted by the cosy Home Theatre, the perfect evening escape.

The centrally located Powder Room allows for effortless entertaining with the open-plan Family/Living and Home Theatre close by. The conveniently positioned Laundry is further enhanced by a Walk-In Linen adding ease to all elements of the home life.

The rear of the Lancaster creates a warm haven for enjoyment and connection with the abundance of light from the large windows and glass doors, leading to the Alfresco, inviting a natural connection to the outdoors whilst adding to a sense of space and relaxation.

The Gourmet Kitchen, with large Island Bench, features an oversized Walk-In Pantry perfectly positioned for busy mornings or enjoyable evenings entertaining and celebrating with loved ones in this wonderful, seamless space.

When you ascend to the upper level a sense of pure relaxation greets you with the secondary Living space offering you options to create a Children's Activity, Home Study or Parent's Retreat to fulfil your family needs and lifestyle aspirations.

The Master Suite is privately positioned at the front of the home with the additional three Bedrooms positioned at the rear and the shared Bathroom close by. You will adore creating your dream Master Suite featuring a spacious Walk-In Robe and refined resort-like Ensuite, a peaceful space you will love to retreat to and unwind within each evening.

The Lancaster fulfils your every desire with an abundance of luxurious elements, perfectly designed for modern compact blocks.

*\*Note: This home fits on a 10m wide block with a zero boundary and 900mm wide maintenance easement. However the authority compliance will differ between Councils and the Housing Code requirements determined once contour levels are available on your block. Minor amendments to the plan may be required.*







# Lancaster 31

				
4	2	1	1	2

↔ 9.040m width x 21.500m length

## Ground Floor

Family/Living	4.7 x 3.8
Dining	4.2 x 4.0
Home Theatre	4.7 x 3.8
Study Nook	1.6 x 3.2
Alfresco Cabana	3.0 x 3.9
Double Garage	5.6 x 5.6

## First Floor

Master Suite	4.0 x 4.1
Bed 2	3.0 x 3.0
Bed 3	3.0 x 3.0
Bed 4	3.0 x 3.0
Children's Activity	4.1 x 3.8



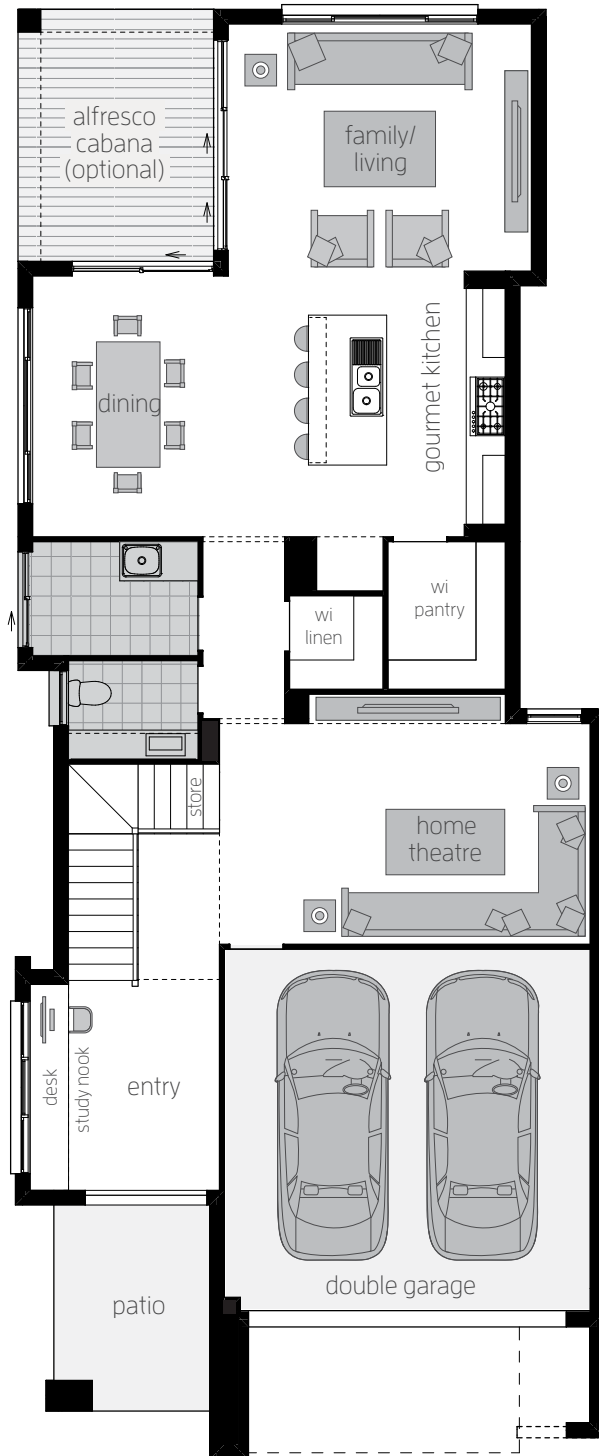
## Lancaster 31 H-LCTCLAD20410

Floor plan depicts **Franke facade**.

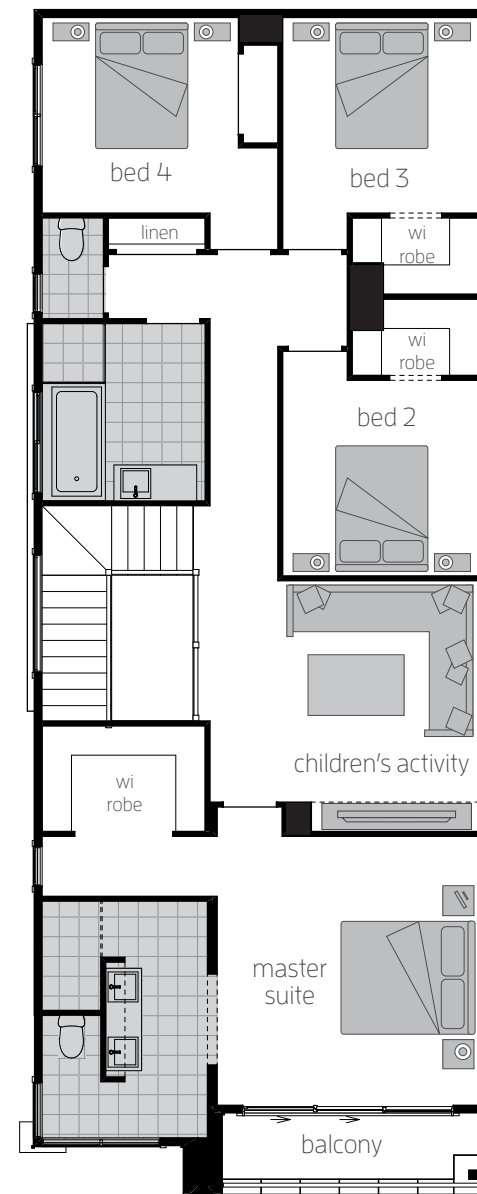
\*Note: This home fits on a 10m wide block with a zero boundary and 900mm wide maintenance easement. However the authority compliance will differ between Councils and the Housing Code requirements determined once contour levels are available on your block. Minor amendments to the plan may be required.

# 10m

Minimum Lot Width  
Assuming one zero lot boundary\*



GROUND FLOOR



FIRST FLOOR



# Lancaster 31

## Upgrades

### Ground Floor

Alfresco Cabana 3.0m x 3.9m

Alternate Kitchen with one appliance tower

Bi-fold door to Dining side wall, Dining rear wall (not shown) and Family/Living (not shown)

Butler's Pantry

Corner joining bi-fold doors to Dining and Family/Living

Feature sliding doors to Home Theatre

Laundry bench with overhead cupboards

Open staircase

Picture window to Family/Living

Splashback window to Alternate Kitchen, Butler's Pantry and Kitchen (not shown)

Stacker door in lieu of window to Dining (not shown)

2080mm x 1810mm window to open staircase

### First Floor

Alternate Ensuite with bath tub (not shown)

Alternate Ensuite with freestanding bath

Bed 5 in lieu of Children's Activity



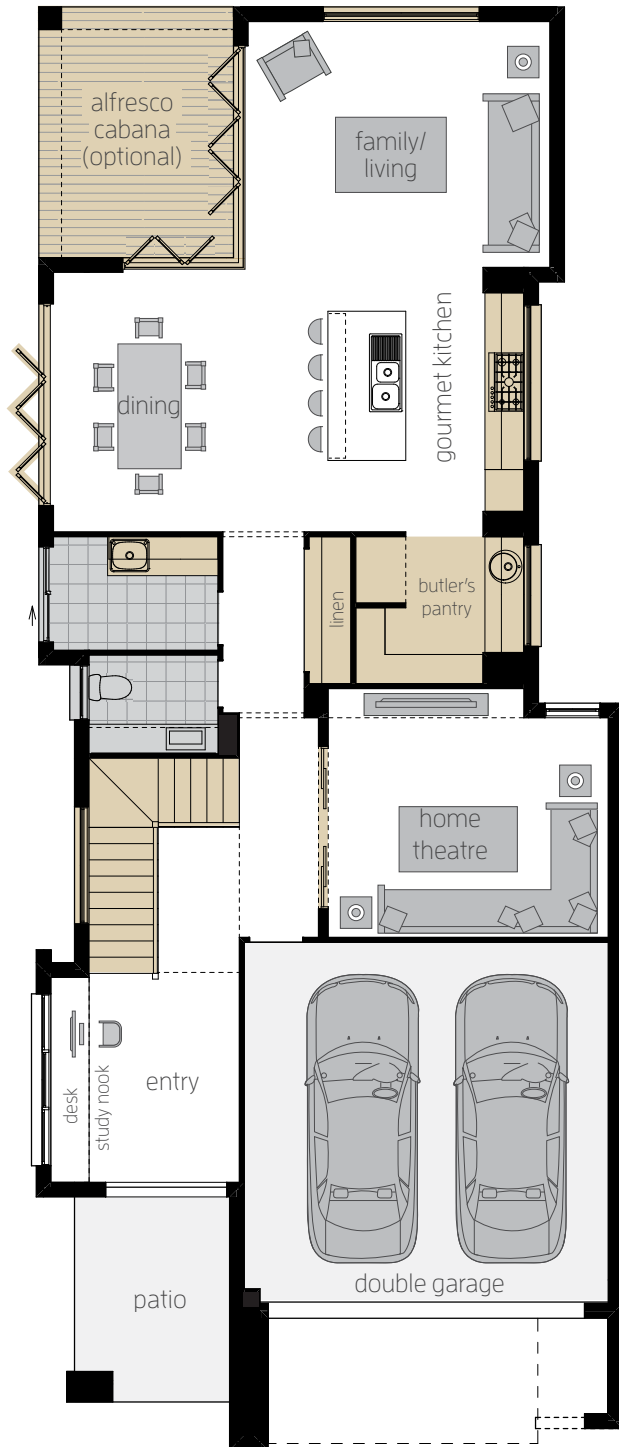
## Lancaster 31 H-LCTCLAD20410

Floor plan depicts **Franke facade**.

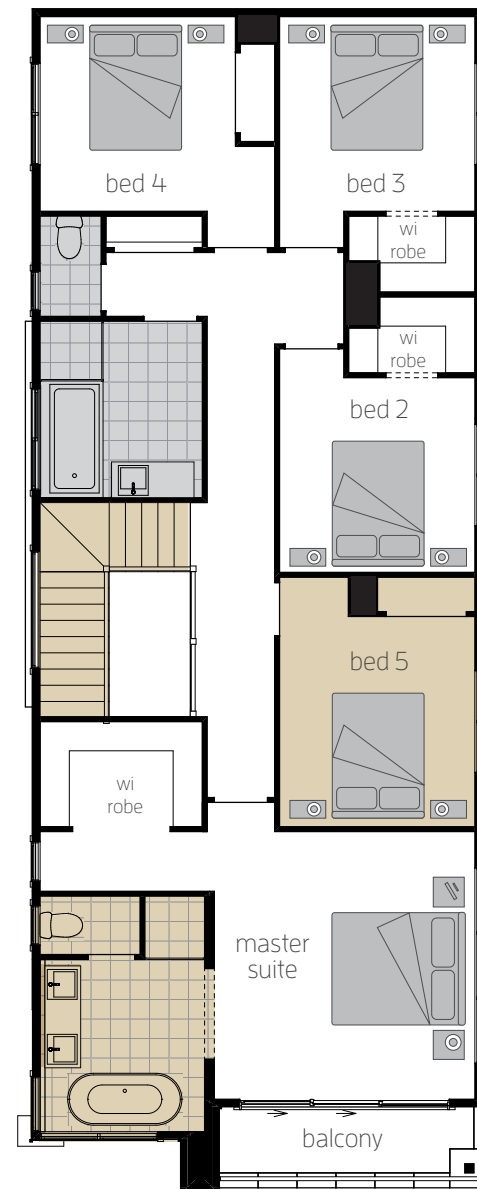
\*Note: This home fits on a 10m wide block with a zero boundary and 900mm wide maintenance easement. However the authority compliance will differ between Councils and the Housing Code requirements determined once contour levels are available on your block. Minor amendments to the plan may be required.

# 10m

Minimum Lot Width  
Assuming one zero lot boundary\*



GROUND FLOOR



FIRST FLOOR

# Lancaster 31

## **Upgrades Alternate**

### **Ground Floor**

Guest Bed, Ensuite and Butler's Pantry  
in lieu of Home Theatre

Guest Bed, Ensuite and Walk-In Pantry  
in lieu of Home Theatre

Laundry bench with overhead cupboards

Remove Study Nook from Entry

Reversed staircase

Splashback window to Butler's Pantry  
(not shown)

### **First Floor**

Alternate Ensuite with freestanding bath

Bed 5 in lieu of Children's Activity

Reversed staircase (Reduced WIR)



## **Lancaster 31 H-LCTCLAD20410**

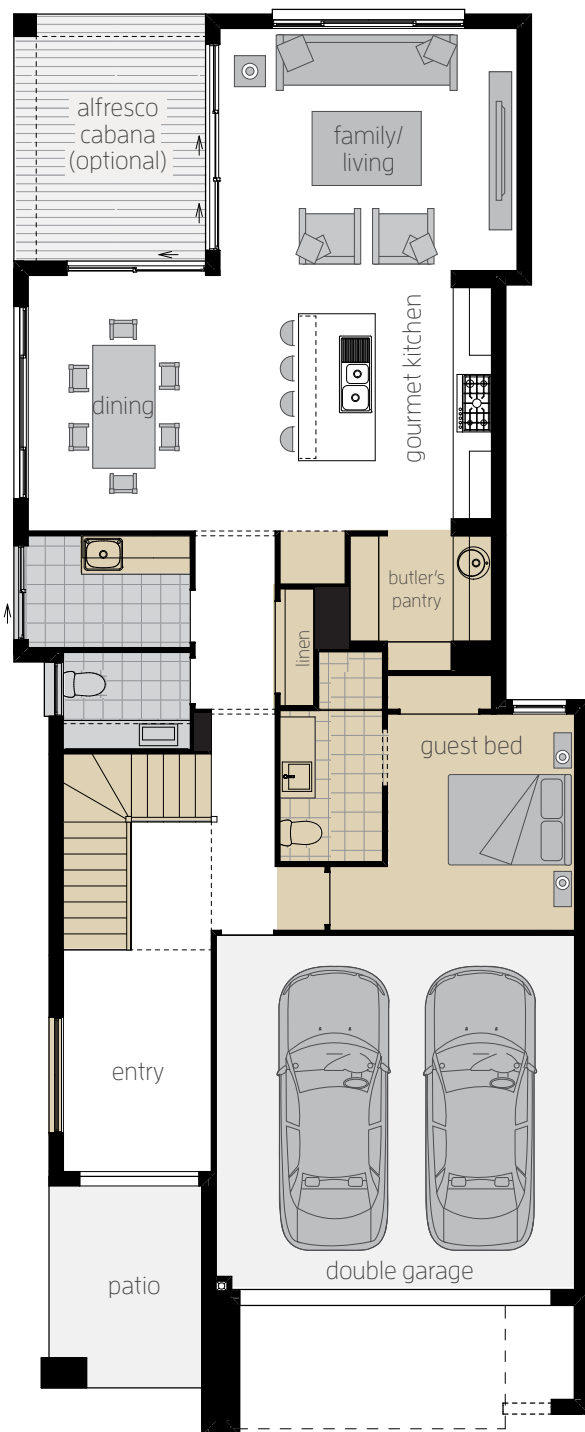
Floor plan depicts **Franke facade**.

\*Note: This home fits on a 10m wide block with a zero boundary and 900mm wide maintenance easement. However the authority compliance will differ between Councils and the Housing Code requirements determined once contour levels are available on your block. Minor amendments to the plan may be required.



# 10m

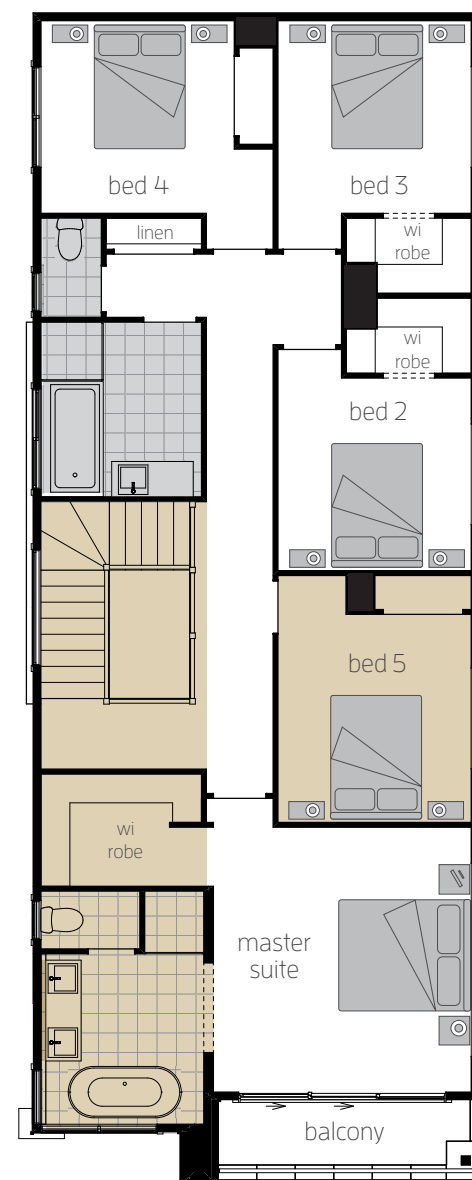
Minimum Lot Width  
Assuming one zero lot boundary\*



GROUND FLOOR



ALTERNATE WALK IN PANTRY



FIRST FLOOR

# Lancaster 29

				
4	2	1	1	2

↔ 9.040m width x 20.475m length

## Ground Floor

Family/Living	4.3 x 3.5
Dining	4.1 x 3.5
Home Theatre	4.7 x 3.6
Study Nook	1.6 x 2.9
Double Garage	5.6 x 5.6
Alfresco Cabana	2.8 x 3.6

## First Floor

Master Suite	4.0 x 4.2
Bed 2	3.1 x 3.0
Bed 3	3.0 x 3.1
Bed 4	3.0 x 3.1
Children's Activity	4.1 x 3.8



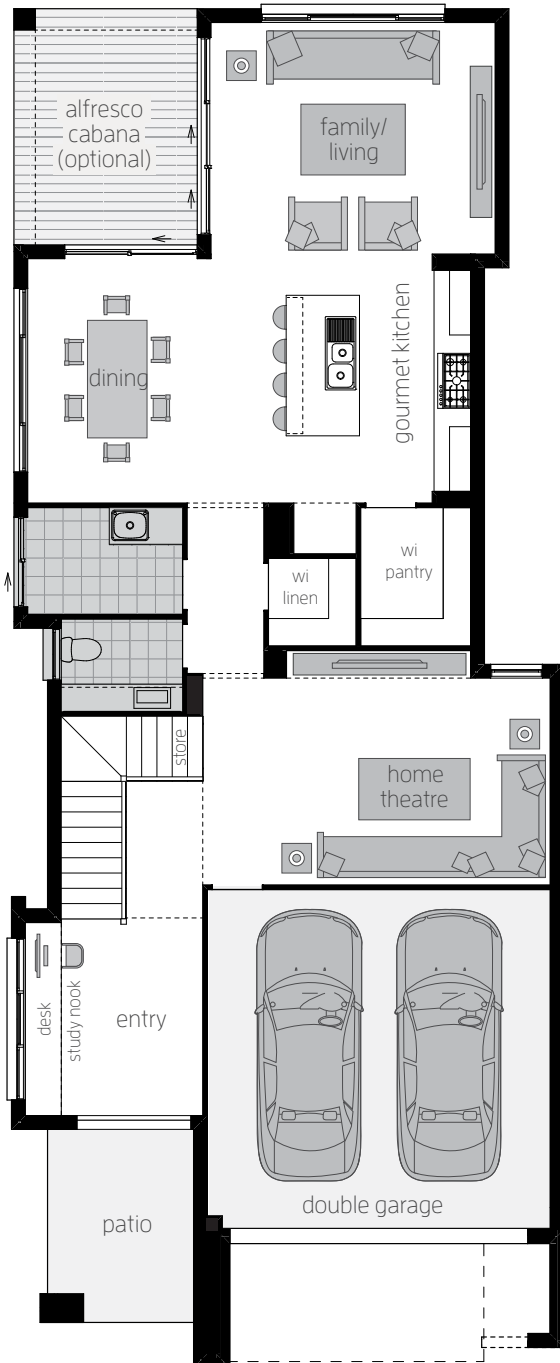
## Lancaster 29 H-LCTCLAD20420

Floor plan depicts **Franke facade**.

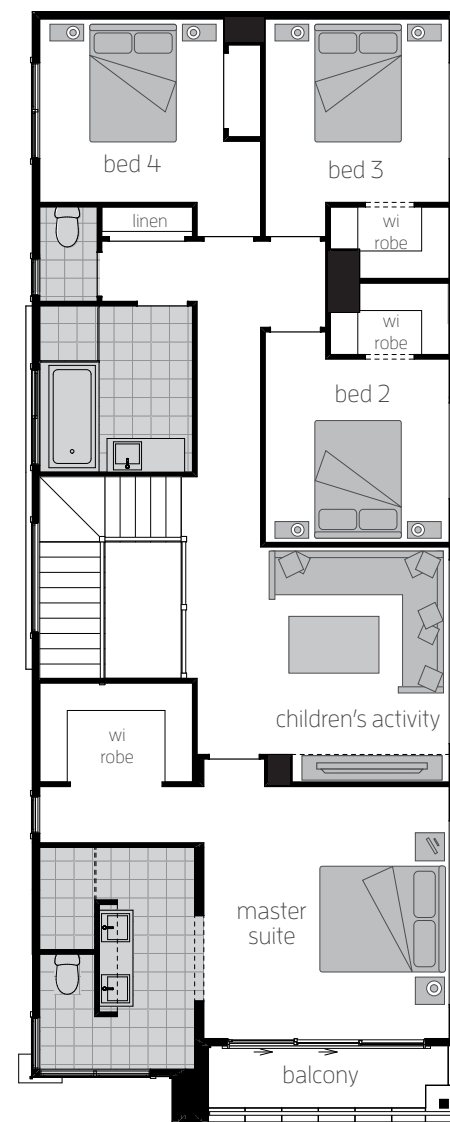
\*Note: This home fits on a 10m wide block with a zero boundary and 900mm wide maintenance easement. However the authority compliance will differ between Councils and the Housing Code requirements determined once contour levels are available on your block. Minor amendments to the plan may be required.

# 10m

Minimum Lot Width  
Assuming one zero lot boundary\*



GROUND FLOOR



FIRST FLOOR



# Lancaster 29

## Upgrades

### Ground Floor

Alfresco Cabana 2.8m x 3.6m

Alternate Kitchen with one appliance tower

Bi-fold door to Dining side wall, Dining rear wall (not shown) and Family/Living (not shown)

Butler's Pantry

Corner joining bi-fold doors to Dining and Family/Living

Feature sliding doors to Home Theatre

Laundry bench with overhead cupboards

Open staircase

Picture window to Family/Living

Splashback window to Alternate Kitchen, Butler's Pantry and Kitchen (not shown)

Stacker door in lieu of window to Dining (not shown)

2080mm x 1810mm window to open staircase

### First Floor

Alternate Ensuite with bath tub (not shown)

Alternate Ensuite with freestanding bath

Bed 5 in lieu of Children's Activity



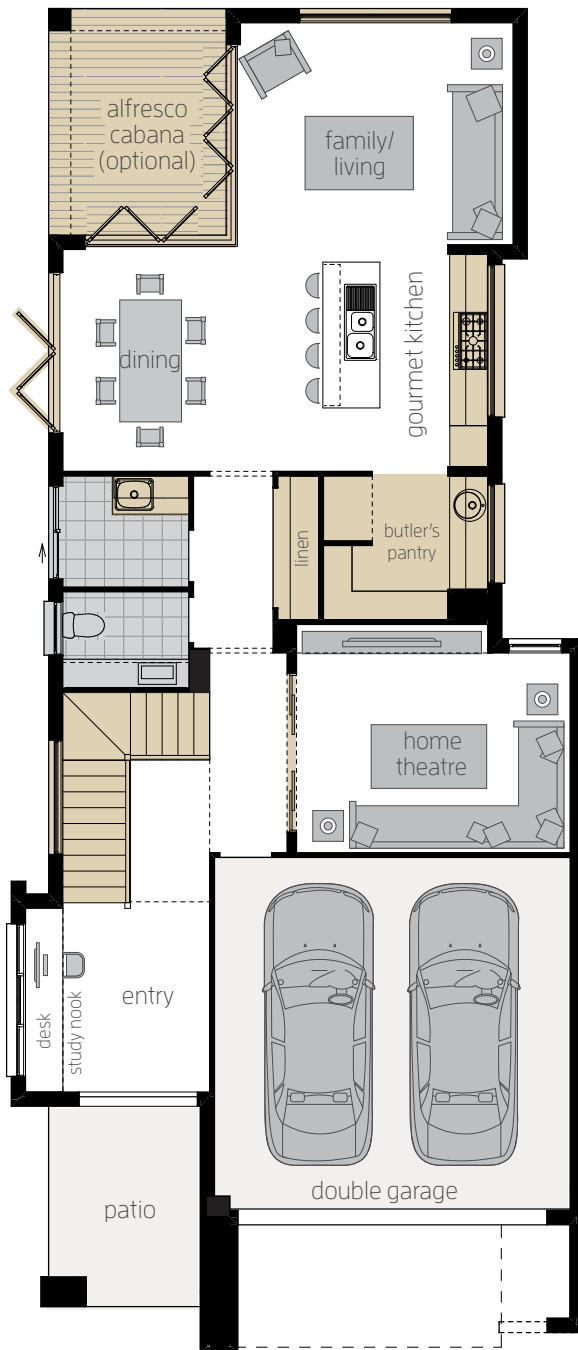
## Lancaster 29 H-LCTCLAD20420

Floor plan depicts **Franke facade**.

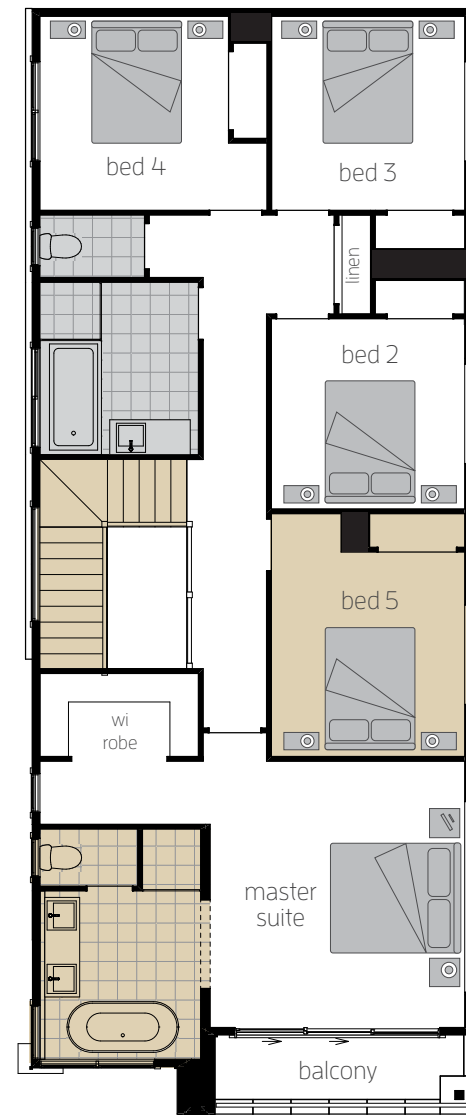
\*Note: This home fits on a 10m wide block with a zero boundary and 900mm wide maintenance easement. However the authority compliance will differ between Councils and the Housing Code requirements determined once contour levels are available on your block. Minor amendments to the plan may be required.

# 10m

Minimum Lot Width  
Assuming one zero lot boundary\*



GROUND FLOOR



FIRST FLOOR

# Lancaster 29

## Upgrades Alternate

### Ground Floor

Guest Bed, Ensuite and Butler's Pantry  
in lieu of Home Theatre

Guest Bed, Ensuite and Walk-In Pantry  
in lieu of Home Theatre

Remove Study Nook from Entry

Reversed staircase

Splashback window to Butler's Pantry  
(not shown)

### First Floor

Alternate Ensuite with freestanding bath

Reversed staircase (Reduced WIR)



## Lancaster 29 H-LCTCLAD20420

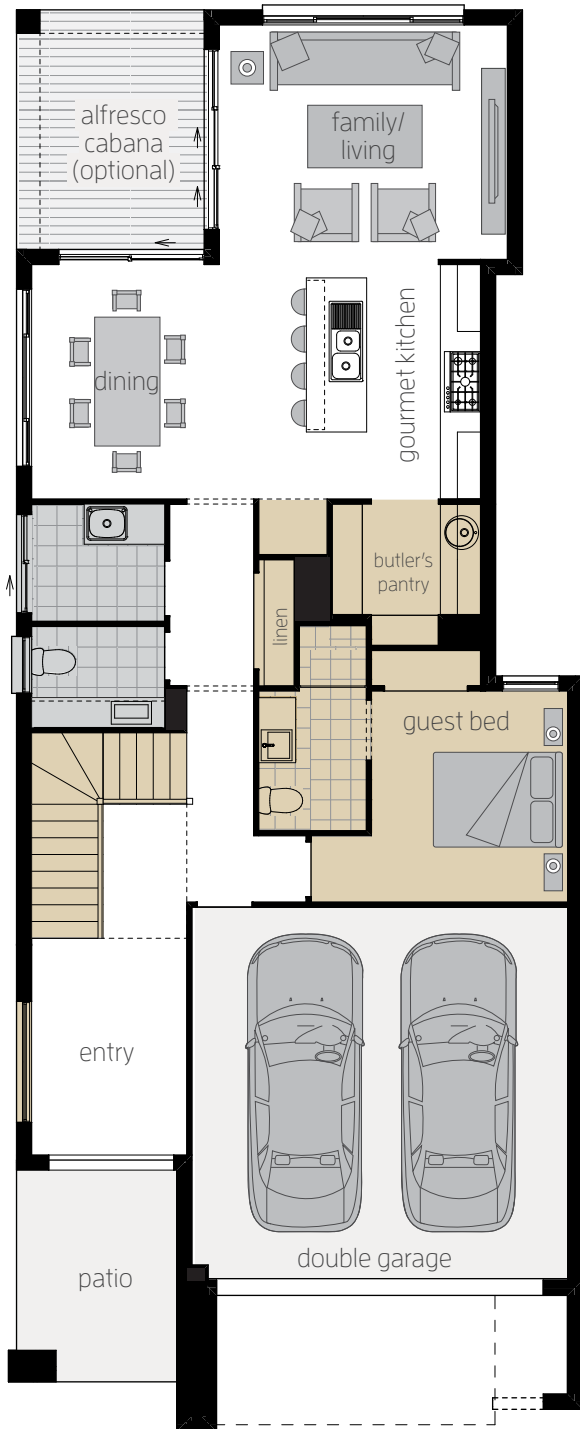
Floor plan depicts **Franke facade**.

\*Note: This home fits on a 10m wide block with a zero boundary and 900mm wide maintenance easement. However the authority compliance will differ between Councils and the Housing Code requirements determined once contour levels are available on your block. Minor amendments to the plan may be required.



# 10m

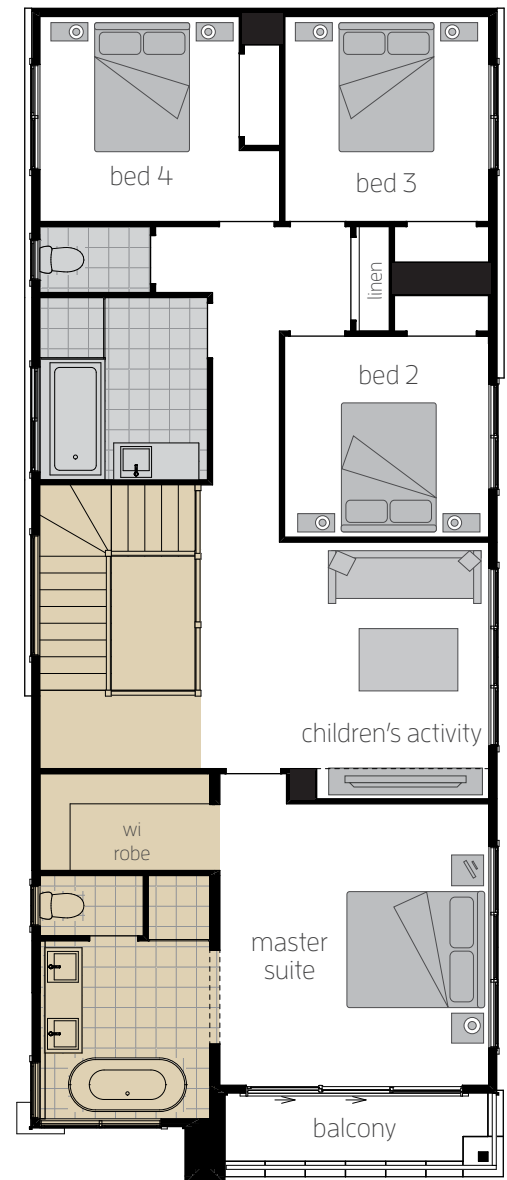
Minimum Lot Width  
Assuming one zero lot boundary\*



GROUND FLOOR



ALTERNATE WALK IN PANTRY



FIRST FLOOR

# Lancaster 26



↔ 9.040m width x 17.790m length

## Ground Floor

Family/Living	4.6 x 3.3
Dining	4.1 x 3.0
Home Theatre	3.7 x 3.3
Study Nook	1.6 x 2.6
Double Garage	5.6 x 5.5
Alfresco Cabana	3.1 x 3.0

## First Floor

Master Suite	4.0 x 4.1
Bed 2	3.3 x 3.0
Bed 3	3.0 x 2.9
Bed 4	3.0 x 2.9
Study Nook	2.3 x 1.7



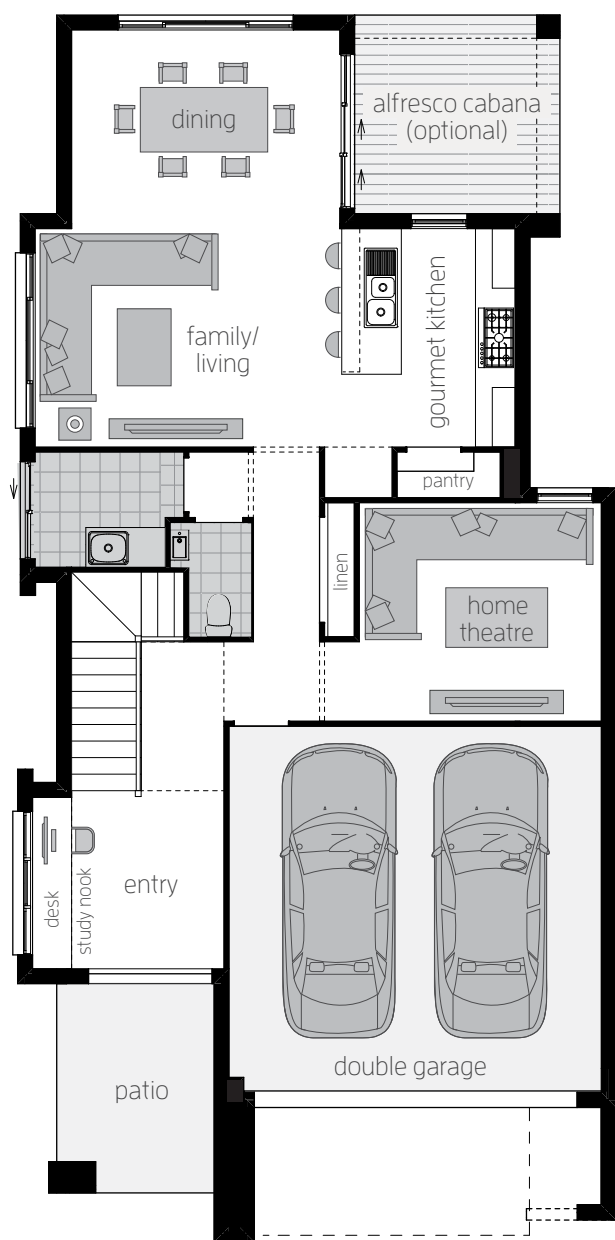
## Lancaster 26 H-LCTCLAD20430

Floor plan depicts **Franke facade**.

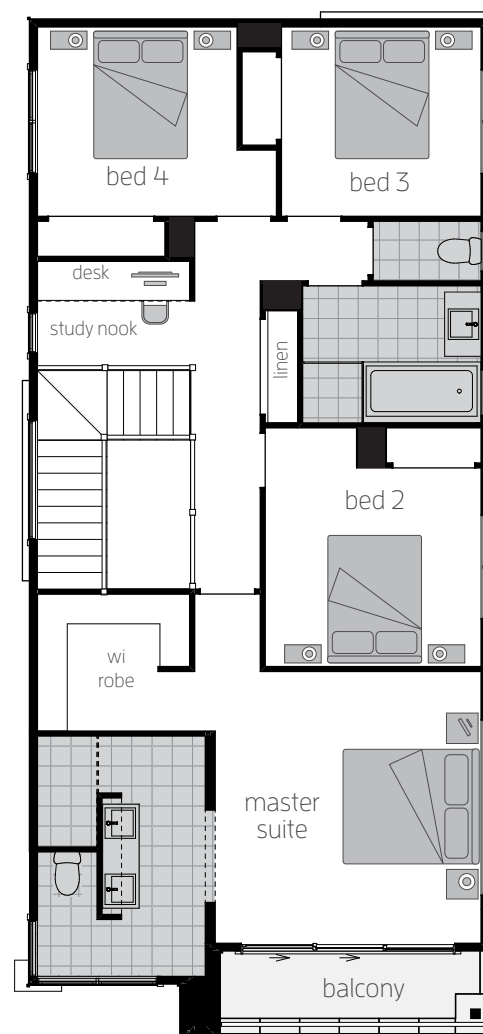
\*Note: This home fits on a 10m wide block with a zero boundary and 900mm wide maintenance easement. However the authority compliance will differ between Councils and the Housing Code requirements determined once contour levels are available on your block. Minor amendments to the plan may be required.

# 10m

Minimum Lot Width  
Assuming one zero lot boundary\*



GROUND FLOOR



FIRST FLOOR



# Lancaster 26

## Upgrades

### Ground Floor

Alfresco Cabana 3.1m x 3.0m

Alternate Kitchen with one appliance tower

Bi-fold door to Dining

Guest Bed in lieu of Home Theatre

Laundry bench with overhead cupboards

Picture window to Dining

Splashback window to Alternate Kitchen and Kitchen (not shown)

### First Floor

Alternate Bathroom layout including Walk-In Linen

Alternate Ensuite with bath tub (not shown)

Alternate Ensuite with freestanding bath

Children's Activity in lieu of Bed 2



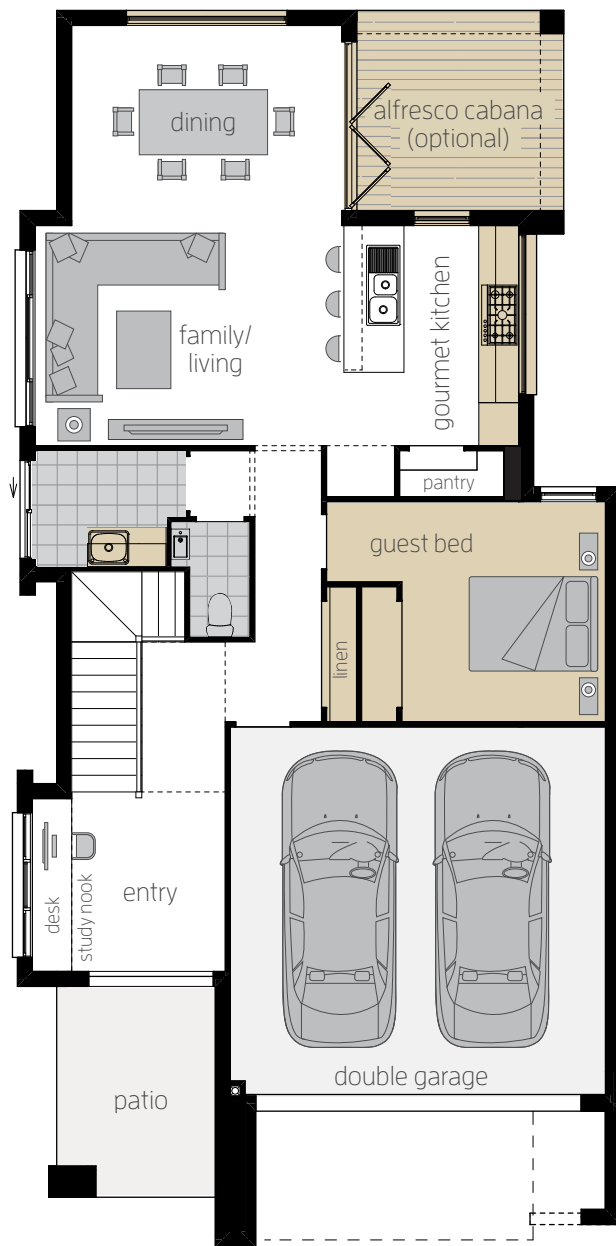
## Lancaster 26 H-LCTCLAD20430

Floor plan depicts **Franke facade**.

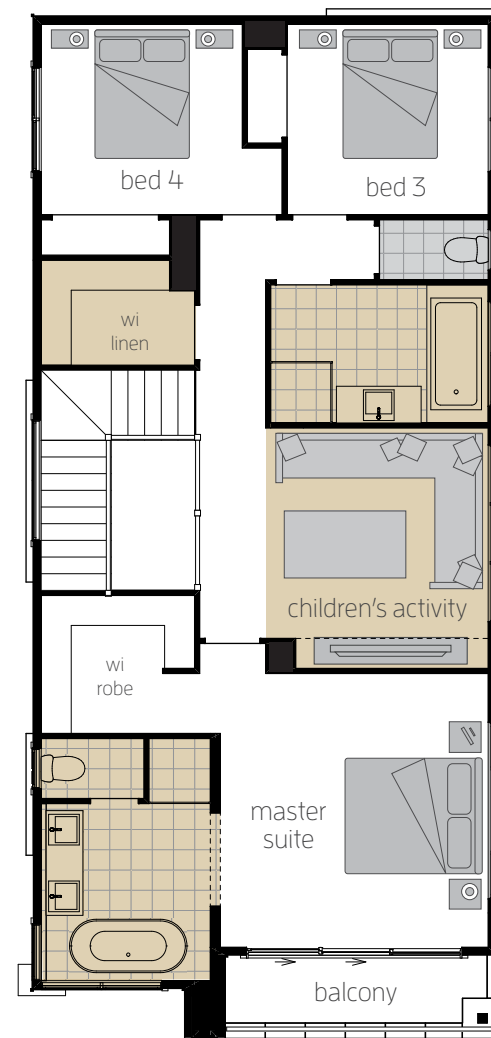
\*Note: This home fits on a 10m wide block with a zero boundary and 900mm wide maintenance easement. However the authority compliance will differ between Councils and the Housing Code requirements determined once contour levels are available on your block. Minor amendments to the plan may be required.

# 10m

Minimum Lot Width  
Assuming one zero lot boundary\*



GROUND FLOOR



FIRST FLOOR

# Lancaster 26

## Upgrades

### Ground Floor

Butler's Pantry, Laundry and Powder Room  
in lieu of Home Theatre

Laundry bench with overhead cupboards

Remove Study Nook from Entry

Splash back window to Kitchen

Walk-In Pantry, Laundry and Powder Room  
in lieu of Home Theatre

### First Floor

Alternate Bathroom layout including  
Walk-In Linen

Alternate Ensuite with freestanding bath

Children's Activity in lieu of Bed 2



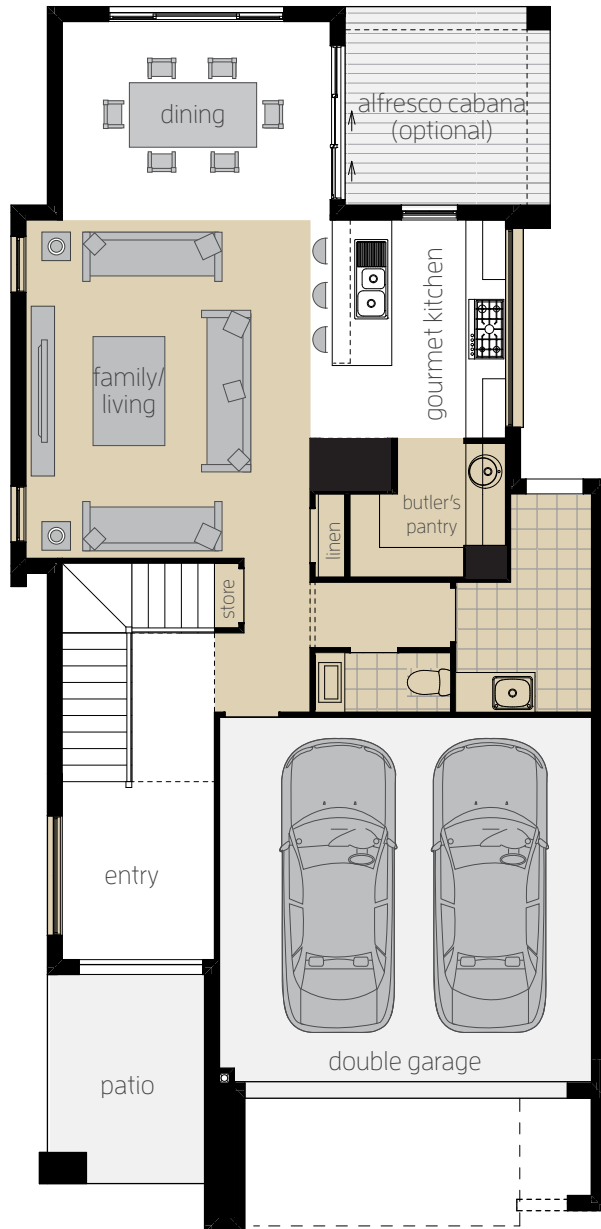
## Lancaster 26 H-LCTCLAD20430

Floor plan depicts **Franke facade**.

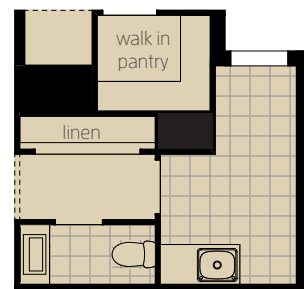
\*Note: This home fits on a 10m wide block with a zero boundary and 900mm wide maintenance easement. However the authority compliance will differ between Councils and the Housing Code requirements determined once contour levels are available on your block. Minor amendments to the plan may be required.

# 10m

Minimum Lot Width  
Assuming one zero lot boundary\*



GROUND FLOOR



ALTERNATE WALK IN PANTRY



FIRST FLOOR



# Lancaster Facades



**HAMPTON D**  
F-LCTHMPD01





**AKRON**  
F-LCTAKRN01



**FRANKE**  
F-LCTFRNK01



**CLASSIC**  
F-LCTCLAS01



**BATEAU**  
F-LCTBTAU01





**1300 555 382**

**[mcdonaldjoneshomes.com.au](http://mcdonaldjoneshomes.com.au)**

Find us on      



**Truecore**  
THE INNER STRENGTH

**Colorbond**

**SUPALOC**  
STEEL BUILDING SYSTEMS



IMPORTANT NOTICE Images of facades shown are a guide only. Material finishes, dimensions and colours shown are purely an expression of the artist and are subject to change. Please refer to our current price list and specifications for facade finishes allowed in published price. Garage doors are panel lift doors. Garage door glazing is an additional cost. Images in this brochure including actual photographs and rendered imagery may depict fixtures, finishes, and features not supplied by McDonald Jones such as furnishings, internal and external fireplaces, landscaping, plants, decking, water features and swimming pools. Accordingly, published prices do not include the supply of any of these items. Images may also depict optional variations to the home design which incur additional costs such as window furnishings, window pelmets, light fittings such as pendant and down lights, front paths, driveways, fencing, barbecues, floor coverings, rendered external walls, upgrade bannisters, and upgraded kitchen/ bathroom layouts or finishes. Images may depict homes from other McDonald Jones design ranges and are used for illustrative purposes. Floor plans and room dimensions may differ slightly depending on your chosen facade (for example, window locations may differ with different facades). Plans are not shown to scale, and all measurements are approximate only. Sliding windows may not open in direction shown. Block widths noted are approximate and suitability may vary by Council (DCP) or Housing Code (CDC) requirements. Title widths have been rounded up so some block widths required could be less. Deleting parapet walls from facades will assist in fitting your house on a lesser sized block. \*Assuming zero lot boundary. Please discuss your block requirements with our Building and Design Consultants. McDonald Jones reserves the right to modify designs or specifications without notice. For detailed home pricing, including details about the standard inclusions for the house and charges for optional variations, please talk to one of our Building and Design Consultants. NSW: McDonald Jones Homes Pty Ltd ABN 82 003 687 232 – NSW BLN: 41628 T/A McDonald Jones Homes - NSW Architect Reg No. 4234. ACT: McDonald Jones Homes (Canberra) Pty Ltd ABN 64 150 533 298 - ACT BLN: 20121296 - ACT Reg No. 2470. © McDonald Jones Homes Pty Ltd. All rights reserved. No part of this brochure may be reproduced, stored in a retrieval system or transmitted in any form or by any means without the prior written permission of McDonald Jones Homes. MCDONALD JONES TWO STOREY – LANCASTER EDITION 1. 28.4.22



**mcdonald jones**  
FIND YOURSELF AT HOME