

STUART EVERITT COLLECTION

# Architect's Choice

LUXURY UPGRADES

FOR ONLY

\$11,990\*



mcdonald jones

FIND YOURSELF AT HOME



WITH OVER  
\$50,000<sup>^</sup>  
VALUE

<sup>^</sup>Value based on MyChoice Design Studio or as a variation to the standard specification.

*Little luxuries in every moment.*

---





# Reward *yourself.*

WITH LUXURY  
INCLUSIONS

WITH OVER  
**\$50,000<sup>^</sup>**  
VALUE

From waking up in the morning and stepping into your new kitchen, take your home to a whole new level of architectural excellence.

Finding your dream home is only the first step in creating a home that is truly you. Fill your dream home with all the things you could ever have hoped for and more with our timeless luxury upgrade package.

With over \$50,000<sup>^</sup> in value, this luxurious range of upgrades will add a feeling of true luxe to your home with awe-inspiring features to indulge in every day.

9

### **Interior elegance.**

Raise the bar with interior additions you'll want the world to see.

10

### **Bathroom & ensuite.**

Inclusions that will make your bathroom your own private sanctuary.

13

### **Premium appliances.**

Stylish appliances that will inspire the culinary king or queen.

14

### **Gourmet kitchen.**

Cook up a feast with high-end features that will suit everyone's tastes.

17

### **Laundry loves.**

Add style and functionality to ease the load.

18

### **Air of comfort.**

Create an indoor paradise with fully ducted reverse cycle air conditioning.

21

### **Precision engineered.**

Give your home the inner strength to last for generations.

22

### **Street appeal.**

First impressions count, these upgrades will make you love coming home.





*Luxe living and entertaining.*



*Time to relax in style.*





「  
YOU  
GET  
THIS  
MUCH  
MORE  
」

INCREASED  
CEILING  
HEIGHT TO  
2550mm<sup>^</sup>  
INCLUDING  
ALFRESCO  
AND FACADE  
ADDING  
SPACE AND  
VALUE TO  
YOUR HOME  
」

# Interior *elegance.*

Raise the bar with interior additions you will want the world to see. These attractive interiors will stand the test of time and look striking long into the future.

**CLIPSAL**  
by Schneider Electric

*Gainsborough*  
ENTER WITH STYLE

HUME DOORS & TIMBER

polytec

**TAUBMANS**  
technology applied



## Paint

**Taubmans** Premium Endure 3 coat system for more coverage with 104 colours to choose from.



## Electrical

**Clipsal** Iconic power points and switches throughout the home.

- TV point to home theatre and living or children's activity.



## Handles

**Gainsborough** internal lever handles in bright or satin chrome.

## Comfort

**Insulation** R4.1 insulation to ceilings and R2.0 insulation to external walls including internal wall of garage.

## Other upgrade inclusions

- Laminated built in computer desks\*.
- 90mm nominal classic look cornice.
- 67mm skirting and architrave.
- Internal gas bayonet point.

# Bathroom & ensuite.

Relax and unwind in your elegant bathroom and ensuite with these designer upgrades.



polytec



## Bathtub

2 options

- 1 **Caroma** Newbury hobbled bath.
  - 2 **Clark** free-standing bath.
- A luxurious free standing bath in lieu of the standard fitted bath to your bathroom.



## Toilet

**Posh** Domaine close coupled rimless toilet suite with soft close seat.



## Taps

**Mizu** Drift chrome tapware with wall mounted bath spout.

## Vanity sinks

2 options

- 1 **Clark** semi-inset square basin.
- 2 **Clark** semi-inset round basin.



## Plugs

Chrome plugs and waste to bath and pop-up waste to basins.



## Water rail

**Mizu** Drift chrome single water rail.



## Other upgrade inclusions

- 2000mm high chrome semi-frameless shower screen.
- Floating wall hung vanity with large frameless square mirror.
- Shampoo recess to bathroom or ensuite (small).
- **Hettich** soft close hinge system to cupboards.
- 20mm Caesarstone benchtops in your choice of 11 colours within the nominated builders colours range.

*Unwind in style.*



*Create a timeless sense of style.*

---







# Premium appliances.

These world-renowned premium appliances will create a kitchen that feels like your own personal 5 star restaurant.

## FISHER & PAYKEL

### Fridge

#### French double door fridge

- This stainless steel French double door fridge freezer offers large flexible space for a busy family.
- Keep drinks cool with a French double door fridge featuring an **ActiveSmart** system with adjustable glass shelves and full extension freezer drawer.
- Choice of integrated fridge if integrated dishwasher selected\*.



### Dishwasher

#### 600mm dishwasher

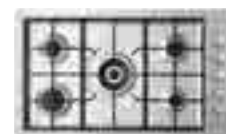
- Dishes will be left sparkling with this 14 place setting digital display dishwasher with 6 wash programs.
- Choice of integrated dishwasher if integrated fridge selected\*.



### Rangehood

#### 900mm externally ducted rangehood

- The ducted rangehood will easily remove steam and smoke from your cooking straight to the outside of your home.



### Cookers

#### 2 options

- 1 900mm gas or ceramic cooktop with 900mm under bench oven.**

- Bake in style with a stainless steel black reflective glass oven with 9 function intuitive control system.

- 2 900mm freestanding oven**

- Make a statement with a stainless steel extra-large oven with 5 burners and 7 cooking functions.



#### Microwave and trim

- Heat up leftovers with ease with this built-in microwave and trim set featuring 5 power levels.



IMPORTANT NOTE: \*Should you choose intergrated appliances that are truly out of sight, these will replace the premium fridge and dishwasher we offer along with the washing machine and dryer. Water connection point not included.

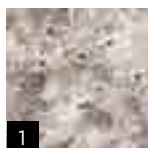
# Gourmet kitchen.

Transform your kitchen with a range of sophisticated finishes that will create a culinary king or queen.



## Benchtop

**20mm Caesarstone** select from 11 colours.



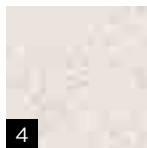
1 Atlantic salt



2 Buttermilk



3 Ginger



4 Nougat



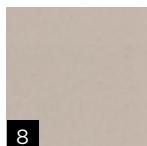
5 Urban



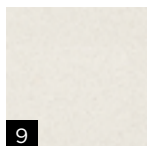
6 White shimmer



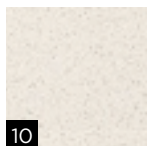
7 Wild rice



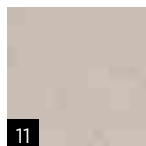
8 Linen



9 Osprey



10 Ice snow



11 Nordic loft

## Sink

**2 options**

1 **AFA** flow double undermount sink.

2 **Posh** Solus MkII 1 ¾ bowl overmount sink with draining board.



## Tap

**2 options**

1 **Mizu** Drift chrome sink mixer with square outlet.

2 **Mizu** Soothe pulldown sink mixer.



## Other upgrade inclusions

- Bulkhead to kitchen.
- Handle free overhead cupboards.
- **Hettich** soft close hinge system to cupboards.
- Melamine shelves in pantry.
- **Water Filters Australia's** Platinum Inline filter system.



*Elegant entertaining.*





*Clean up in style.*

---







# Laundry loves.

Added functionality and world-renowned appliances will add a touch of charm to even the simplest of tasks in the laundry.

FISHER & PAYKEL

Hettich

polytec

reece<sup>™</sup>  
Plumbing Centres



## Washing machine *2 options*

- 1 10kg top load washing machine\***
  - 2 8.5kg front load washing machine\* (WA8560G1)**
- Make washing simple with a top load or front load washing machine that includes 6 wash cycles, SmartDrive technology and SmartTouch controls.



## Clothes dryer **5kg vented clothes dryer\***

- Dry clothes quicker with a vented clothes dryer with auto sensing and 4 dry cycles.



## Laundry tap *Posh* Bristol MkII mixer tap.



## Laundry sink 42L drop-in stainless steel tub into cabinet up to 1200mm, with laminated benchtop.

## Other upgrade inclusions

- Under bench cabinets fit to your design with laminated benchtop up to 1200mm.
- **Hettich** soft close hinge system to cupboards.

# Air of comfort.

Since 1984, ActronAir has been at the forefront of air conditioning with some of the world's quietest and most energy efficient systems, perfect for Australia's unique and demanding conditions.



Enjoy heating and cooling comfort all year round with a fully ducted reverse cycle air conditioner. Whether it's a 40° summer's day or you're escaping the winter chills, create an indoor paradise everyday.

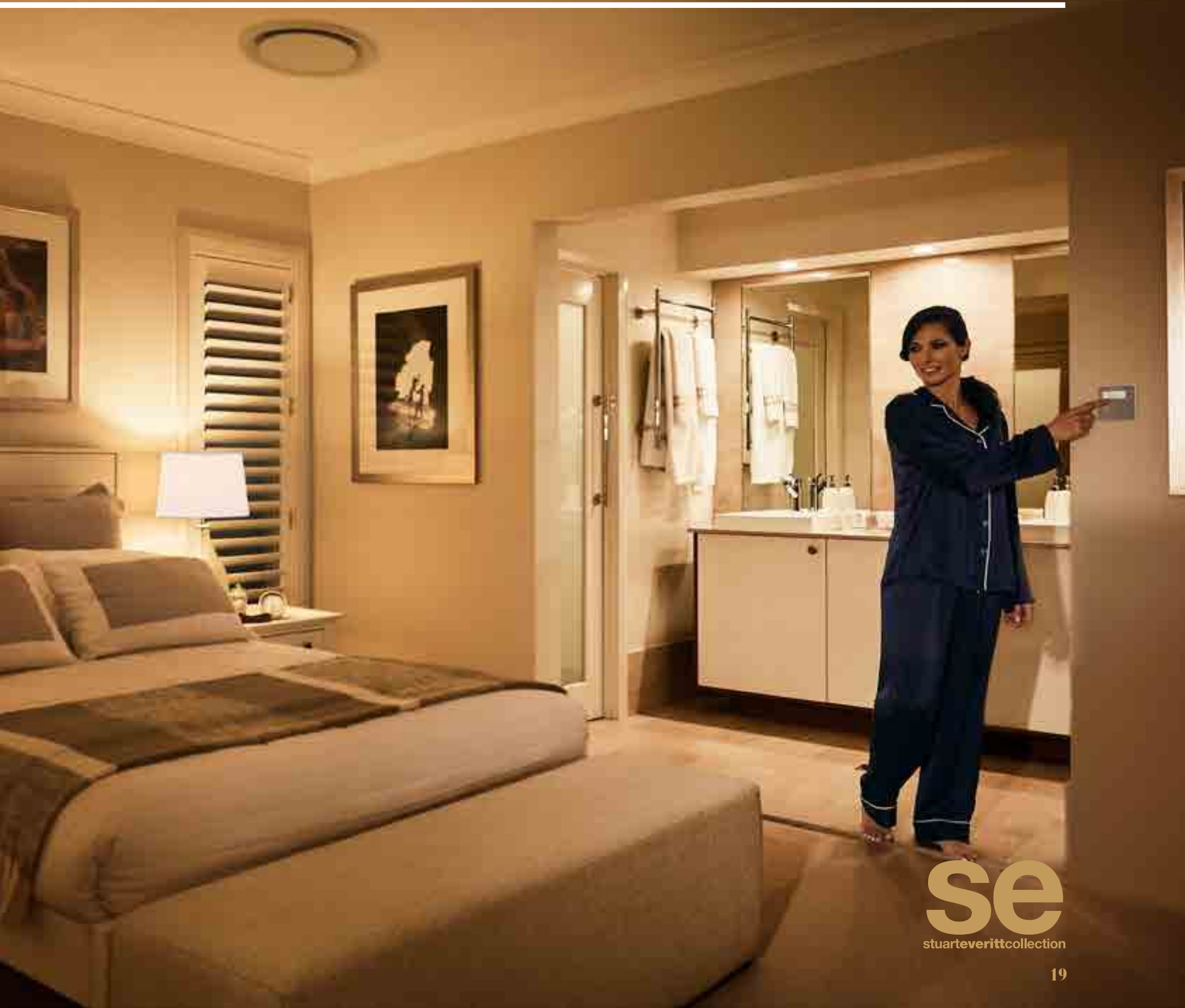
Fully ducted reverse cycle **Actronair** system\*

- Australian made to withstand the hottest and coldest conditions Australia can throw at it.
- Bring your home to a comfortable temperature quickly.
- Year round comfort.
- Superior operating range -10° - +50°.
- 5 year warranty.

\*The classic ActronAir air conditioning model and number of outlets may vary based on preferred home design.



*Unwind in style.*



**se**  
stuarteverittcollection



*True blue Truecore strength.*

---

**se**  
stuarterittcollection



# Precision *engineered.*

From inside to out, give your home strength  
to last for generations to come.

**Truecore**  
THE INNER STRENGTH

**Colorbond**

**MONIER**

**SUPALOC**  
STEEL BUILDING SYSTEMS

## Roof

### 2 options



#### 1 100% steel frame and trusses with **Colorbond** roof.

- **Truecore**® steel - Australian made to meet Australian standards.
- Precision engineered.
- Strong and durable.
- **Supaloc** framing system.
- Unparalleled accuracy and strength.
- Straight and true.
- 100% termite and borer proof.
- 50 year structural warranty\*.
- Absolute peace-of-mind.



#### 2 100% steel frame and trusses with two different **Monier** roof tile options.

- **Elebana** is a versatile profile that combines traditional good looks with exceptional product performance.
- **Atura** roof tiles are a timeless and enduring look that retains authentic charm that will enhance any modern or period Australian home.

# Street appeal.

First impressions count so coming home to your stylish new home should deliver the ultimate satisfaction and sense of achievement.



## Front door

**Hume** Newington front door.



## Door lever

**Gainsborough** Trilock contemporary lever to your front door.

## Hot water system

Continuous flow hot water system delivers immediate heated water whenever you need it. Sleek and streamlined good looks, 6 star efficiency and 26 litre capacity. (Note: gas must be available).

## Added peace of mind

Superior **Kordon** termite management system (in lieu of reticulated chemical system) including all external door openings and garage.

## The final touch

Ground glass house plaque with mounted embossed silver lettering with your choice of house name.

## Other upgrade inclusions

- Increased roof pitch from 22.5° to 26°.
- Sectional overhead garage door with automatic door opener including 2 remotes.
- Upgrade brick selection and optional bag and paint finish to front facade.
- Plasterboard lined garage walls.



*San Marino Executive 16*



*Create street envy.*



**se**  
stuarneverittcollection





**For more information contact us 1300 555 382 or visit [mcdonaldjoneshomes.com.au](https://mcdonaldjoneshomes.com.au)**

IMPORTANT NOTICE: \*The upgrades included in the Architects Choice Luxury package price are listed in this brochure. Images in this brochure may depict items not supplied by McDonald Jones such as landscaping and furniture; images may also depict other optional variations to the house which are not included in this upgrades package and incur additional charges. Images in this brochure may depict homes from any McDonald Jones design range and are shown for illustrative purposes only. Some images may depict fixtures, finishes and features not supplied by McDonald Jones such as decking, internal and external fireplaces, window and household furnishings, landscaping and swimming pools. Published prices do not include the supply of these items. Images may also depict optional variations to the house, such as upgraded facades, pendant lights and downlights, which are not included in this upgrades package and incur additional charges. For detailed home pricing, including details about the standard inclusions and charges for optional variations, please talk to one of our consultants. For more information on the Bluescope Steel Warranty visit [www.truecore.com.au](https://www.truecore.com.au) or call 1800 022 999. ^The indicated value reflects the price of the upgrade package items based on Miami home design and façade, should they be optionally selected and purchased in the MyChoice Design Studio or as a variation to the standard specification. Newcastle Quality Constructions Pty Ltd ABN 82 003 687 232 - NSW Builder's Licence number 41628 T/A McDonald Jones Homes. McDonald Jones Homes (Canberra) Pty Ltd ABN 64 150 533 298 - ACT Builder's Licence Number 20121296. Edition 4 14.8.2019.