



**mcdonald jones**

FIND YOURSELF AT HOME

# CANBERRA REGION

LINDEMAN

---

**next  
gen**  
built for living

**se**  
stuar**teveritt**collection

**2S**  
two storey

# LINDEMAN

## Family-Friendly

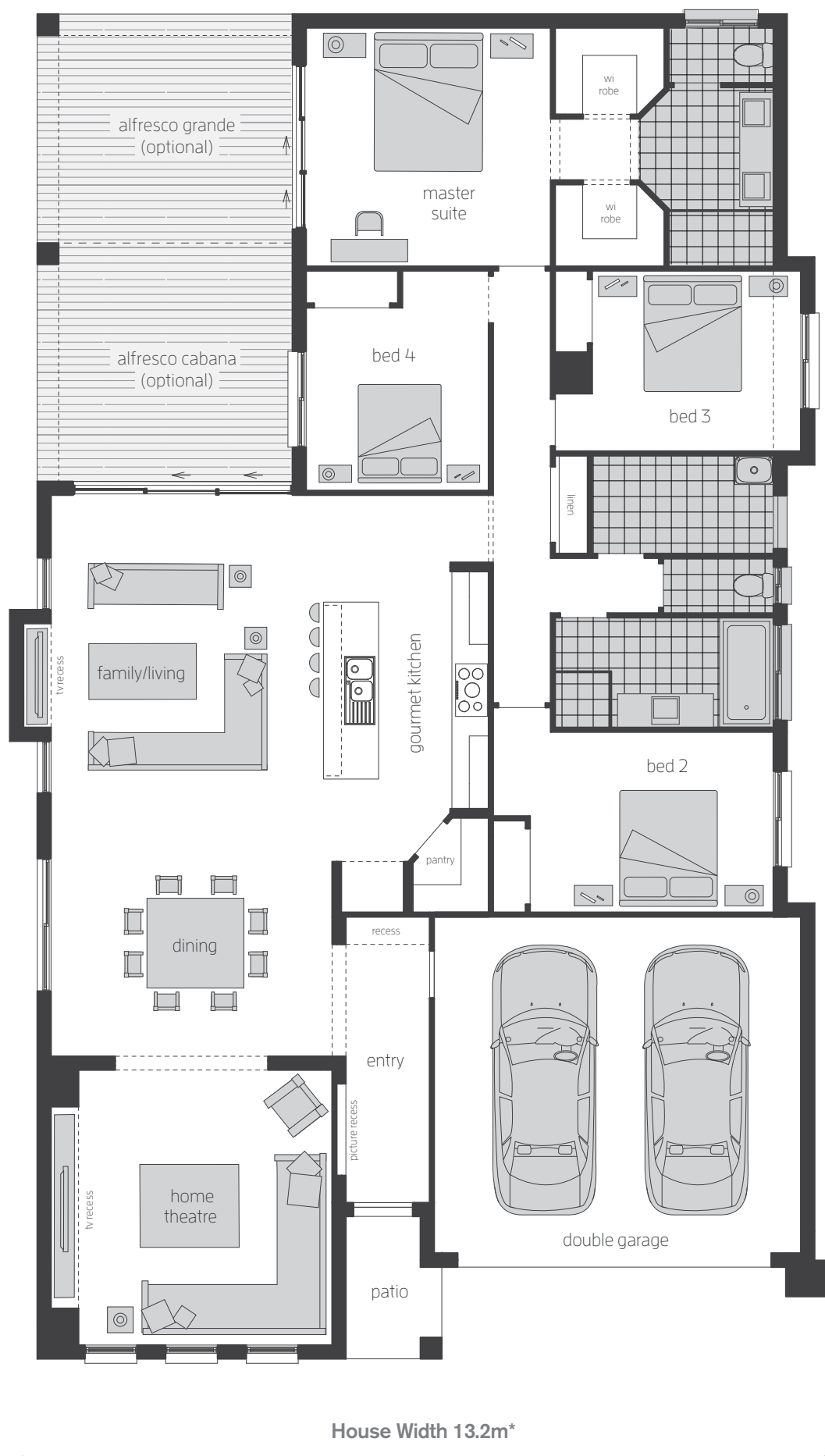
The Lindeman provides the room and functionality to cater to a growing family throughout generations. This home features plenty of space and an expansive open plan living area that offers a luxurious Gourmet Kitchen, making it ideal for modern living.

The seamless transition from indoor to outdoor living in your stunning Alfresco creates an entertainer's paradise. This home comes complete with four

Bedrooms, including your own private Master Suite with his and her Walk-In Robes.

If you're looking for a home that offers something for every member of the family, the spectacular Lindeman is perfect for you.





## LINDEMAN

- 4 bedrooms**
- 2 bathrooms**
- 2 car spaces**
- 13.2m**
- 13.170m width x 22.000m length**

House Code: H-LNDCLAS14400  
This floor plan depicts the Classic facade.

**Living m<sup>2</sup>** 195.4  
**Patio m<sup>2</sup>** 3.4  
**Garage m<sup>2</sup>** 36.0  
**Alfresco Cabana m<sup>2</sup>** 16.3  
**Total m<sup>2</sup>** 251.0  
**Approx Squares** 27

Family/Living/Dining	4.5 x 9.2
Master Suite	4.0 x 3.9
Bed 2	4.6 x 3.0
Bed 3	3.4 x 3.0
Bed 4	3.0 x 3.6
Home Theatre	4.6 x 4.5
Double Garage	6.0 x 5.5
Alfresco Cabana	4.2 x 3.9
Alfresco Grande	4.2 x 7.6

### Optional Upgrades

Alfresco Cabana  
Alfresco Grande  
Study (not shown)

\*Block widths required differ from area to area, please check with a Building and Design Consultant.





**Executive F-LNDEXEC01 (26°)**



**Traditional F-LNDTRAD01 (26°)**



**Cascade C F-LNDCASC01 (26°)**



**Balinese Resort F-LNDBART01 (26°)**



## LINDEMAN



**Balinese Tropicana** F-LNDBATA01 (26°)



**Contemporary** F-LNDCTMP01 (26°)



**Classic** F-LNDCLAS01 (26°)



CANBERRA OFFICE: 02 6143 2000



[mcdonaldjoneshomes.com.au](http://mcdonaldjoneshomes.com.au)



**Truecore®**  
100% Australian Made Steel

**Colorbond®**



**IMPORTANT NOTICE** Images of facades shown are a guide only. Material finishes shown are purely an expression of the artist. Please refer to our current price list and specifications for facade finishes allowed in published price. Images in this brochure may depict homes from other McDonald Jones design ranges and are used for illustrative purposes only. Floor plans will differ slightly depending on the facade chosen (for example, window locations may differ with different facades). Images in this brochure may depict items not supplied by McDonald Jones such as landscaping and furniture and other optional variations to the house which are not included in the standard inclusions and incur additional charges. Some images may depict fixtures, finishes and features not supplied by McDonald Jones, such as decking, internal and external fireplaces, window and household furnishings, landscaping and swimming pools. Published prices do not include the supply of these items. Images may also depict optional variations to the house, such as pendants and downlights, which are not included in the standard inclusions and incur additional charges. For detailed home pricing, including details about the standard inclusions and charges for optional variations, please talk to one of our Sales Consultants. McDonald Jones Homes (Canberra) PTY LTD ABN 64 150 533 298. Licence number 20121296. Newcastle Quality Constructions PTY LTD ABN 82 003 687 232. Licence number 41628 T/A McDonald Jones Homes. Architect Registration Numbers: NSW Registration No 4234. ACT Registration No 2470. For more information call us on 1300 555 382 or visit [mcdonaldjoneshomes.com.au](http://mcdonaldjoneshomes.com.au). © McDonald Jones Homes Pty Ltd. All rights reserved. No part of this brochure may be reproduced, stored in a retrieval system or transmitted in any form or by any means without the prior written permission of McDonald Jones Homes. CANBERRA REGION EDITION 3, JANUARY 2018.